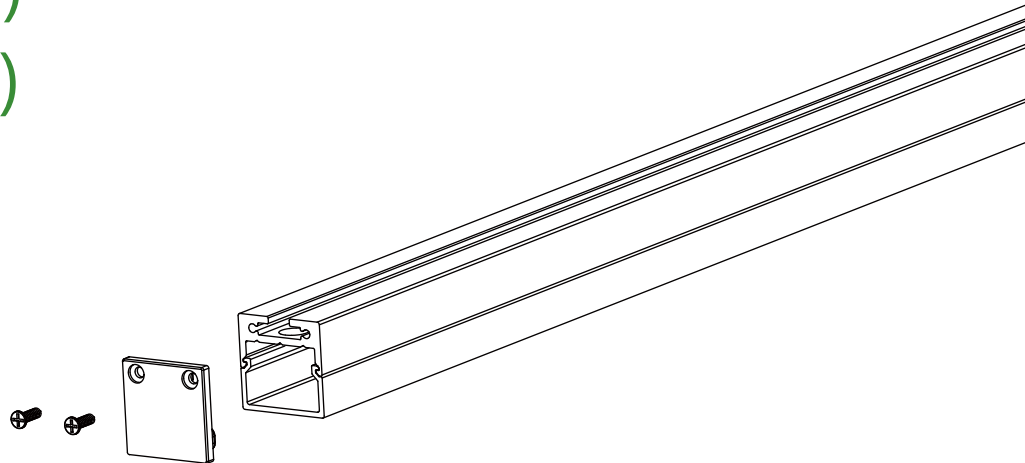


USER MANUAL

LINE S1911K(B)

LINE S1911C(B)

LINE S1911P(B)



Please read the manual carefully before installation and application, and use the product in the correct way.

Instructions on accessories are included in the manual.

Please properly maintain the manual after reading and understanding it for convenient reference by all users of the product in the future.

CONTENTS

01 Components

02 Installation

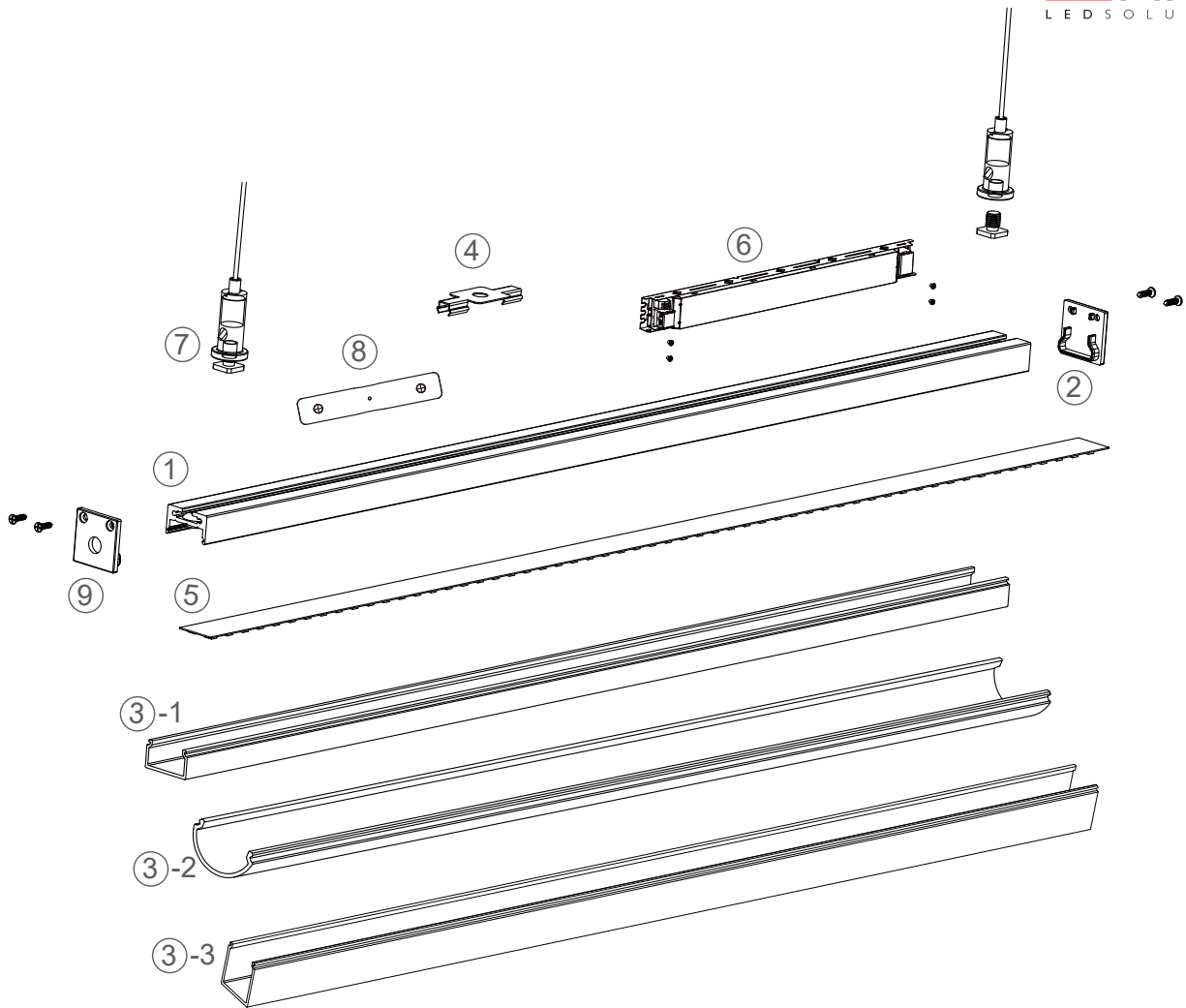
Surface mounted

Wall mounted

03 Profile assembling

04 Cutting

05 Applications



Essential

- ① Profile x1
- ② End cap x4
- ③-1 "K" diffuser x1
- ③-2 "C" diffuser x1
- ③-3 "P" diffuser x1
- ④ Clip x8

Installation accessories *

- ⑦ Pendant accessories
- ⑧ 180° extender

Lighting Source and Power Supply *

- ⑤ Flexible strip
- ⑥ Power supply

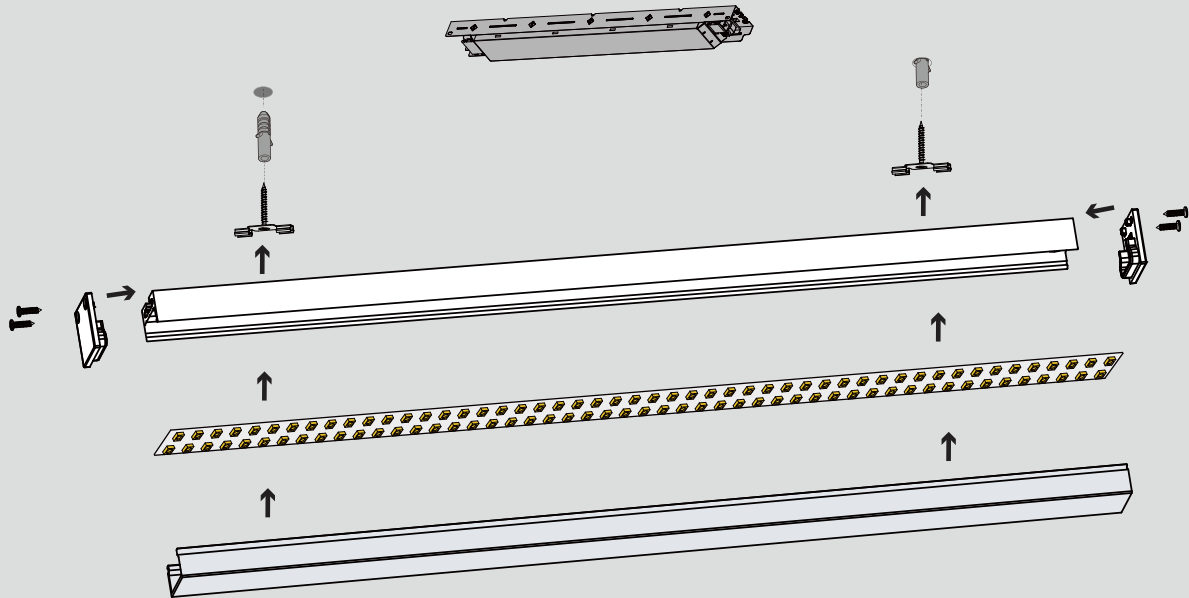
Others *

- ⑨ End cap with opening

* Optional parts

Installation

Surface mounted



1 Wiring at the installation location (mains supply)

⚠ Do not touch with wet hand or there is risk of electric shock

2 Install the power supply at a proper location

⚠ Do not place the power supply in water or remove it without permission

Connect to DIM

3 Place insulation on both ends of the strip and place the strip on the profile

⚠ Strips with exposed copper foil on the back shall be insulated

4 Mount the diffuser on the profile (K, C or P diffuser to be selected depending on the application demand)

5 Mount the end caps (with and without hole)

⚠ If assembling is required, please read the detailed profile assembling steps on P08 and do it in the correct way

⚠ For an end cap without hole, wire goes out from the profile bottom, while it goes out from an end cap with a hole of \varnothing 6mm

End cap with hole

End cap

6 Make an hole of \varnothing 5mm at the mounting position and seal it with a rubber plug

⚠ If the product is mounted on a plate, skip the step

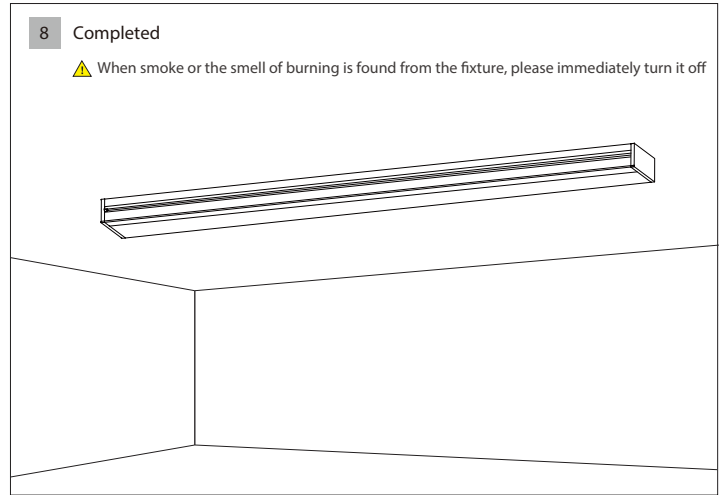
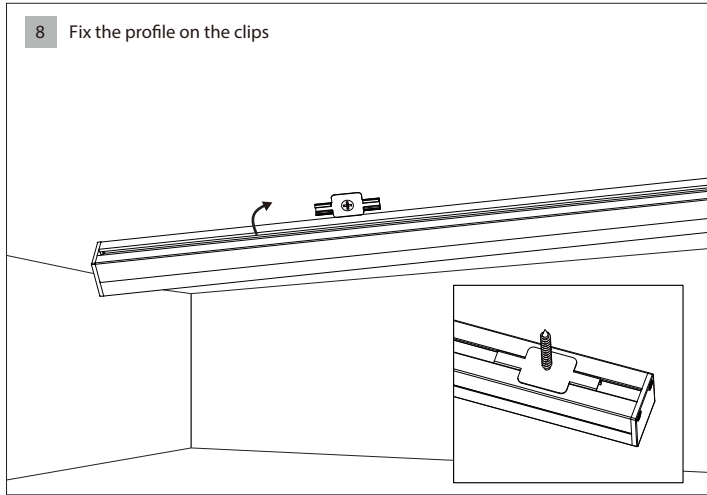
7 Fixe the clips on the rubber plug or plate

⚠ The number of clips to be used depends on the profile length (L):

- When $L \leq 1.2m$, 2pcs of clips are recommended
- When $1.2m < L \leq 2.5m$, 4pcs of clips are recommended

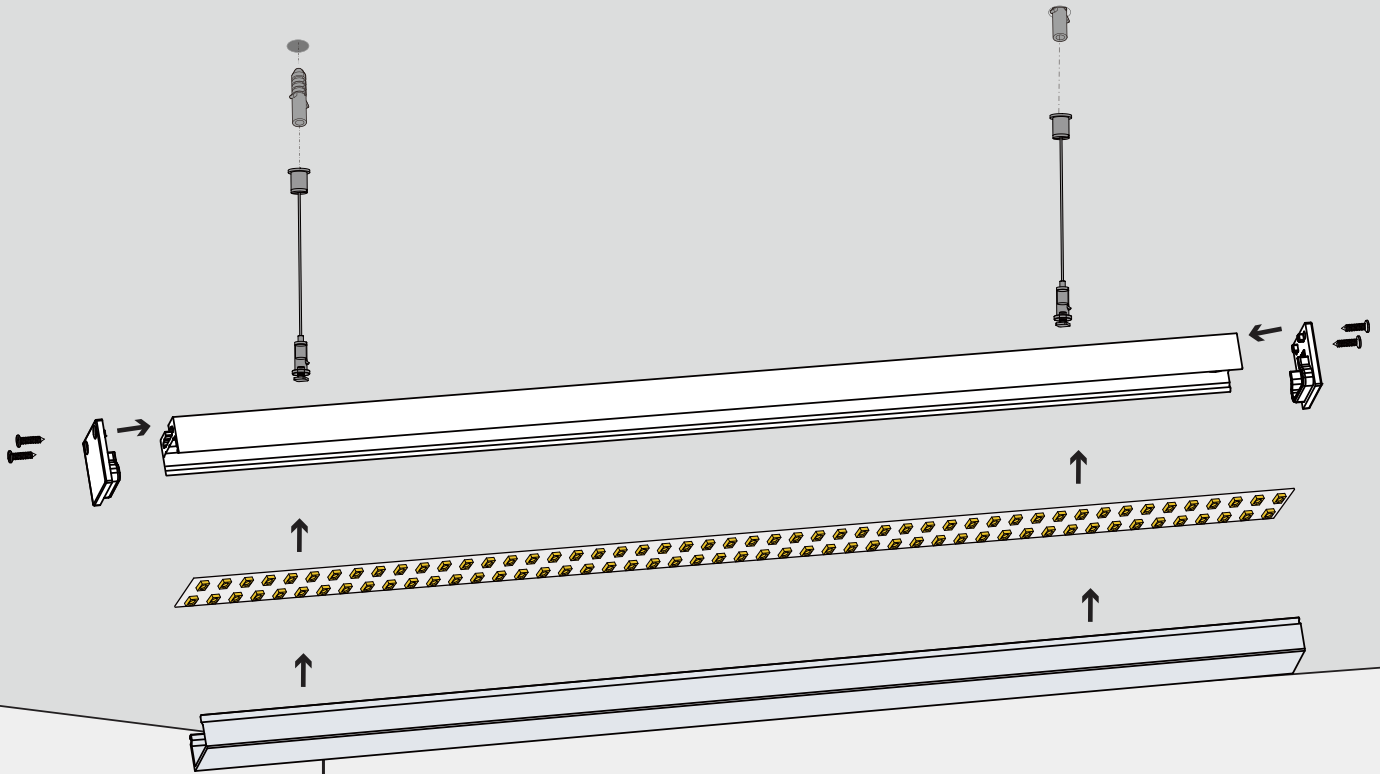
8 Connect the strip wire in the profile with the output line of the power supply

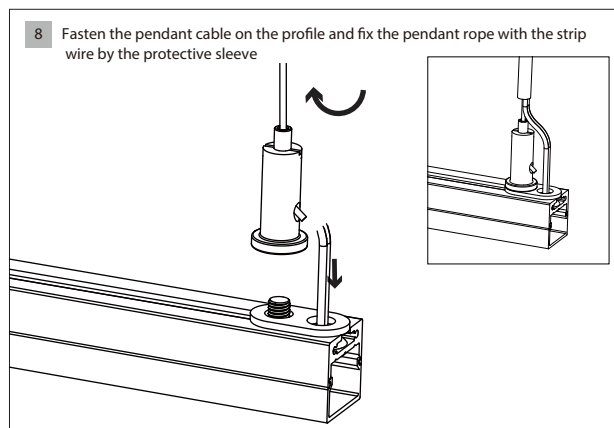
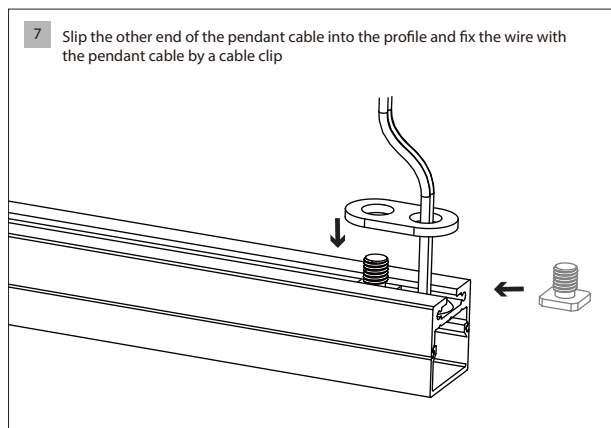
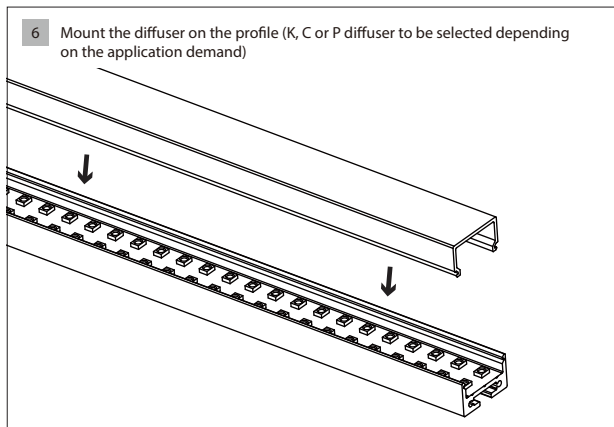
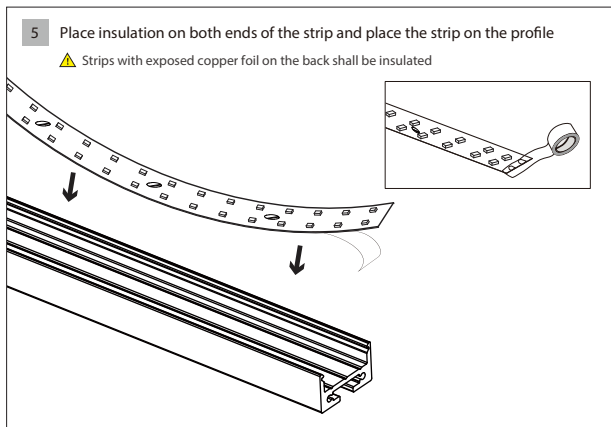
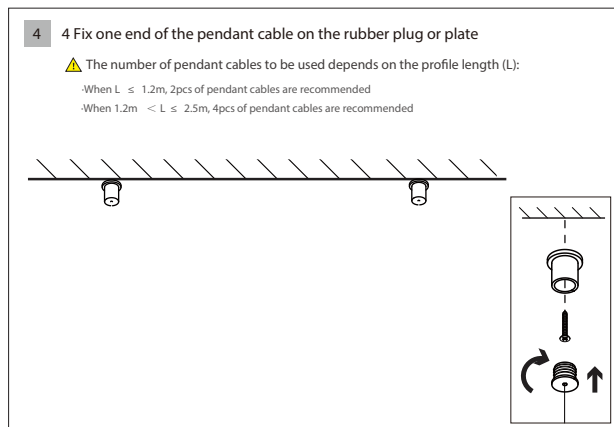
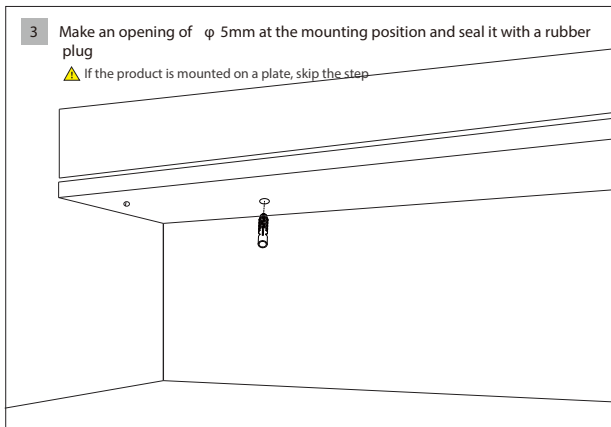
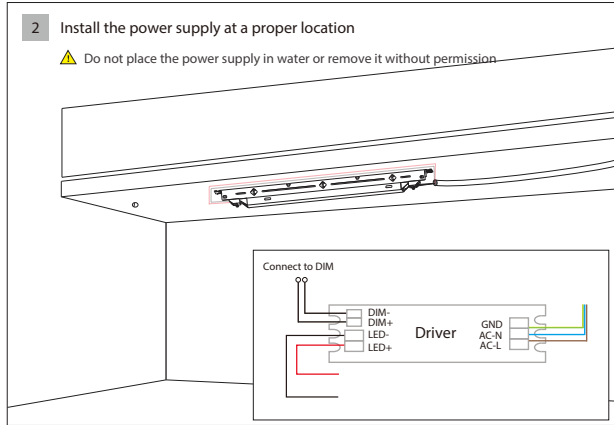
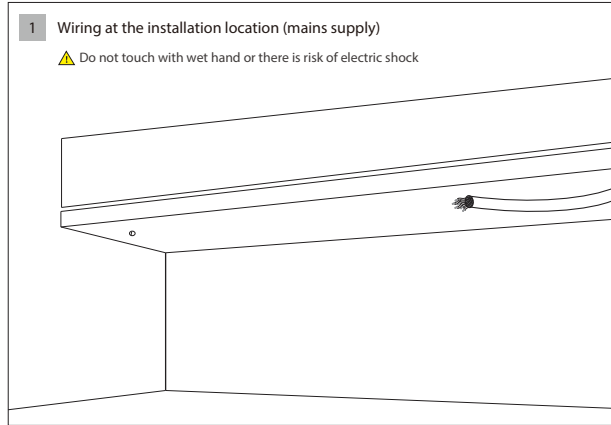
Connect to DIM



Installation

Suspended





9 Fix the end caps (with and without hole) on the profile with screws

- ⚠ If assembling is required, please read the detailed profile assembling steps on P08 and do it in the correct way
- ⚠ For an end cap without hole, wire goes out from the profile bottom, while it goes out from an end cap with a hole of \varnothing 6mm

End cap

End cap with hole

10 Fix the pendant cable at the mounting position

- ⚠ Please make sure the pendant cable is firmly fixed

11 Connect the strip wire in the profile with the output line of the power supply

Connect to DIM

DIM-	DIM+	LED-	LED+
Driver			
GND	AC-N	AC-L	
+		-	
LED			

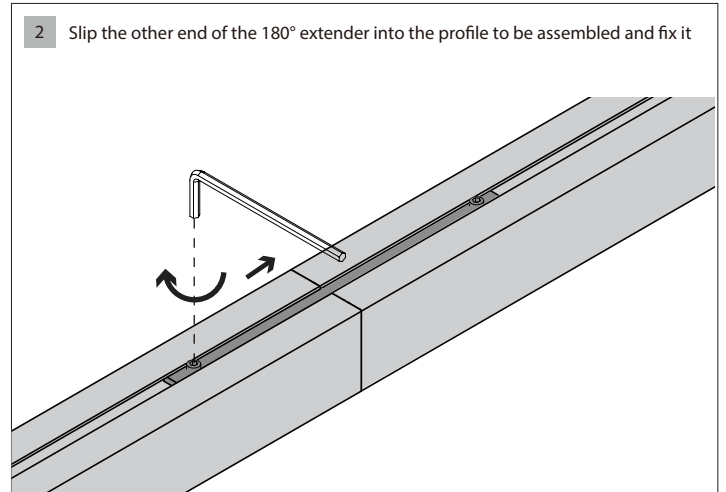
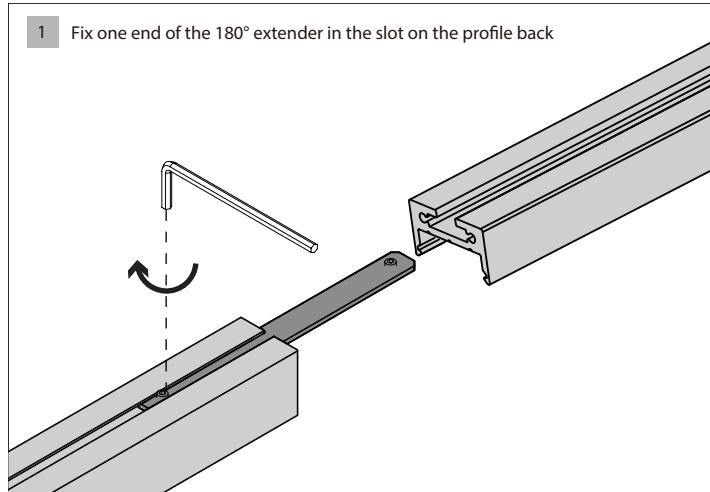
12 Adjust height of the fixture

13 Completed

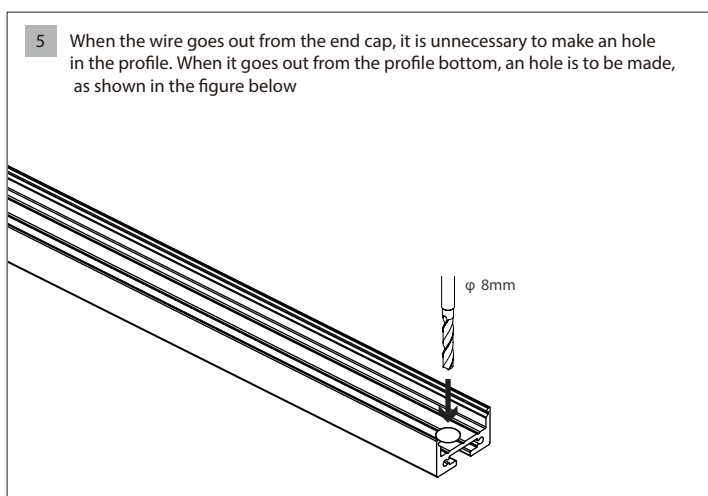
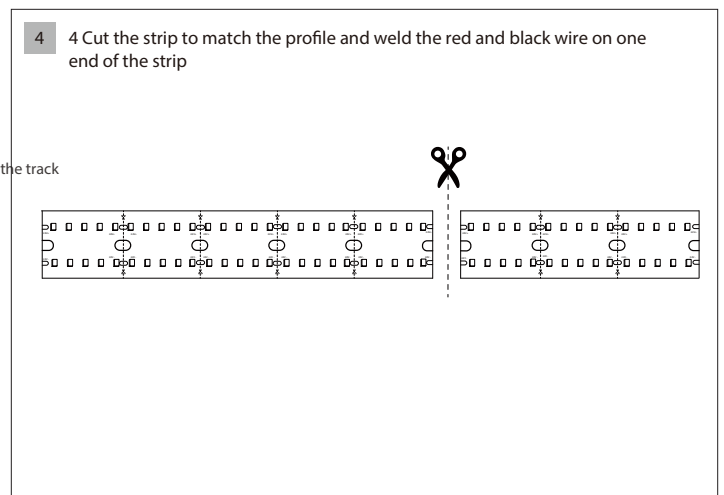
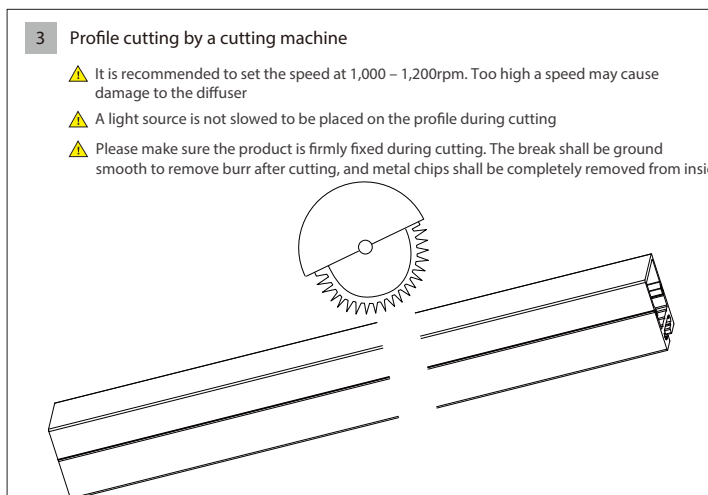
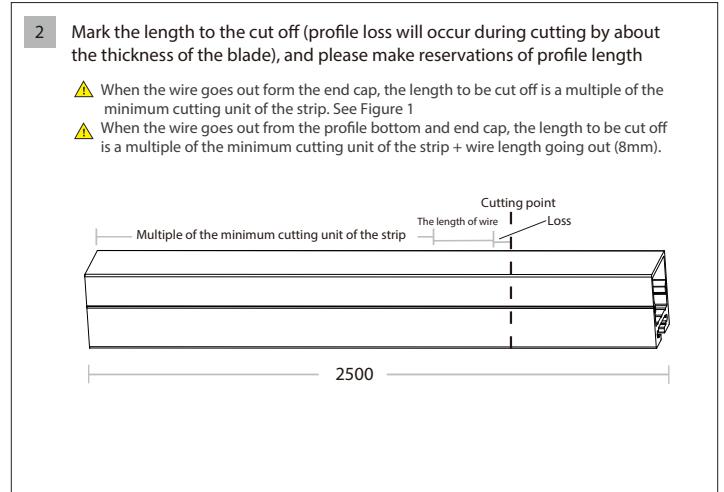
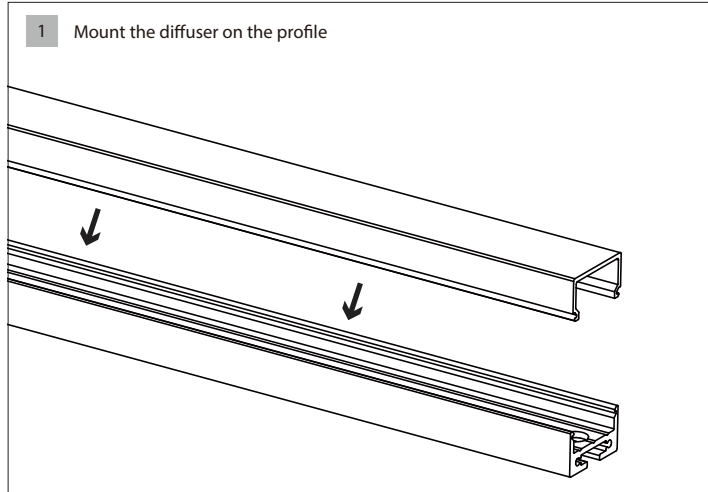
- ⚠ When smoke or the smell of burning is found from the fixture, please immediately turn it off

Profile assembling

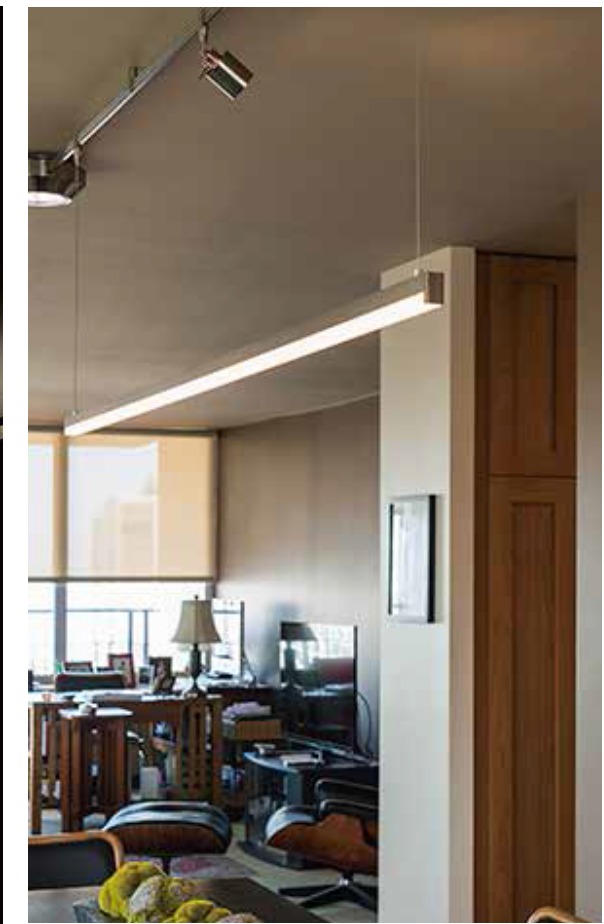
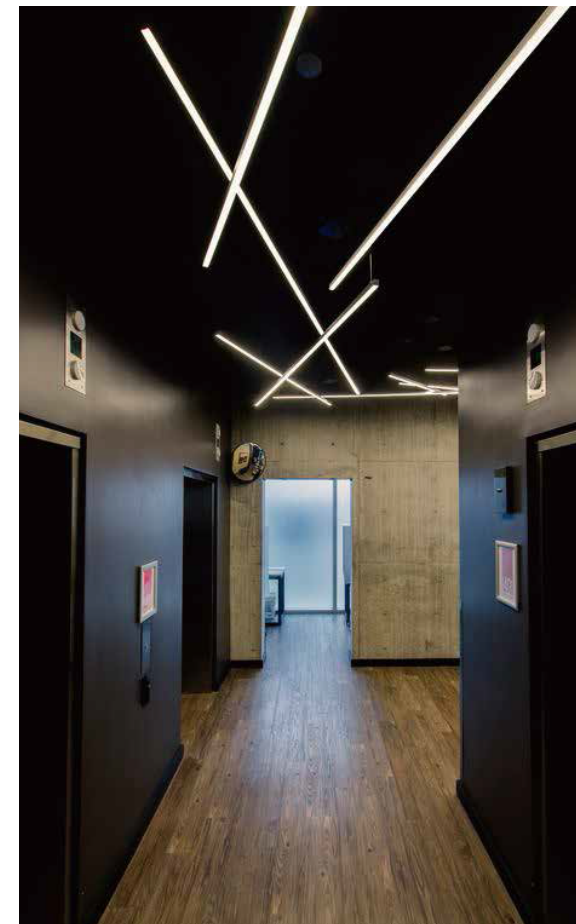
Please read carefully the detailed installation steps before installing the assembling strips. The installation steps are as follows:



Cutting



Applications





www.switch-made.com