

# FT » BLACKMOON 8 II-S CEILING MOUNTED

## TECHNICAL DATA



|   |                     |      |            |                    |                            |                                    |
|---|---------------------|------|------------|--------------------|----------------------------|------------------------------------|
|  | 220-240V<br>50-60Hz | IP20 | UGR<br><19 | CRI<br>>80/>90/>97 | CITIZEN LED<br>CLU028-1204 | DIMMABLE<br>1-10V/DALI<br>Optional |
|---|---------------------|------|------------|--------------------|----------------------------|------------------------------------|

High-end innovative compact LED recessed downlight for accentuation lighting application, specially designed qualitative-smoothly curved reflector ensure better visual comfort with an optimum light output ratio, excellent glare control, high efficient LED COB offering >90 lm/W, SDCM<2, machined aluminium trim with powder-coated finishing, die-cast aluminium heat sink with sand black finishing, high reflectance aluminium reflector.

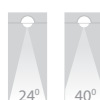
DRIVER  
CC, 350mA, 34Vdc

Lighting Control  
Standard ☐ Phase Dim. ☐ 1-10V ☐ DALI ☐

CRI

Standard  
☐ CRI >80 ☐ CRI >90 ☐ CRI >97

BEAM ANGLE



### TECHNICAL DATA

|                    |  |
|--------------------|--|
| LED                | : CITIZEN CLU028-1204 COB                            |
| System Power       | : 2 x 8 W  |
| MacAdam Step       | : <2 SDCM  |
| Luminaire Efficacy | : 90 lm/W (@3000K)                                   |
| Lifetime           | : L <sub>70</sub> B <sub>50</sub> 50,000Hrs, Ta@35°C |
| UGR                | : <19  |

### GENERAL

|                 |                           |
|-----------------|---------------------------|
| Mounting        | : Ceiling Mounted, Indoor |
| Housing         | : Die-cast aluminium      |
| Reflector       | : Aluminium               |
| Diffuser        | : Clear glass             |
| Adjustability   | : Yes                     |
| Driver mounting | : Integrated              |
| Emergency kit   | : N.A.                    |

|                      |                               |
|----------------------|-------------------------------|
| IP Rating            | : IP20                        |
| IK Rating            | : -                           |
| Protection Class IEC | : II                          |
| Energy Class         | : A+                          |
| Working Temp.        | : -20° to 50°C                |
| Glow-wire test       | : 960°C                       |
| Weight               | : -                           |
| Warranty             | : 3 yrs (extendable to 5 yrs) |

| COLOR TEMP. | POWER   | CRI | LUMENS     | CODE         |
|-------------|---------|-----|------------|--------------|
| 2700K       | 2 x 8 W | 90+ | 2 x 704 lm | INT03106-27K |
| 3000K       |         |     | 2 x 712 lm | INT03106-30K |
| 4000K       |         |     | 2 x 740 lm | INT03106-40K |

FT

# BLACKMOON 8 II-S CEILING MOUNTED

## TECHNICAL DATA

FINISH

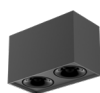
### Trim:

White (WH) - Black (BK)



### Reflector:

High Gloss Black (HGB) - High Gloss Silver (HGS) - Frosted Silver (FS) - White (WH)



BK-HGS



WH-FS

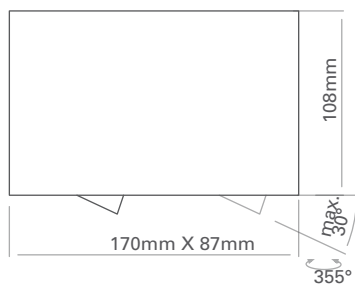


BK-BK



WH-BK

DIMENSION



NOTES

ISO DOC. NO.: SM-OPN-QSF08

CE RoHS

PROJECT  
LUMINAIRE REF.  
QUANTITY  
DATE

Contact Name

Mobile

Email