


Daylight
Sensor

Microwave
Sensor

Emergency
Control

FT



COMET-ALU 1500

TECHNICAL DATA


220-240
Vac

IP65

IK08

CRI
>80

SMD 2835

120 lm/W

0-10V/DALI
Optional

Solid and reliable tri-proof luminaire, streamline structure makes light homogenous and uniform lighting, superior degree of protection, delivers higher lumen levels makes it suitable for high ceiling applications, aluminium base offers excellent heat dissipation, UV-stabilized milky PC diffuser, strong corrosion resistant, multi-functional lighting options, durable silicone rubber gasket, M20 quick-connector for fast-easy connection, integrated driver, delivered with surface mounting kit and suspension hook.

DRIVER
CC

Lighting Control

Standard

1-10V

DALI

CRI

Standard
CRI >80

CRI >90

BEAM ANGLE



120°

FINISH

Aluminium (AL)



TECHNICAL DATA

LED	:	SMD 2835 LED
System Power	:	75 W
MacAdam Step	:	SDCM <3
Luminaire Efficacy	:	120 lm/W (@6500K)
Lifetime	:	$L_{80} B_{50}$ 50,000Hrs, Ta@35°C
UGR	:	<22

GENERAL

Mounting	:	Ceiling, wall mounted, suspended, industrial
Housing	:	Aluminium
Heatsink	:	Aluminium
Diffuser	:	Opal PC
Adjustability	:	No
Driver Mounting	:	Integrated
Emergency kit	:	3H Optional available

IP Rating	:	IP65
IK Rating	:	IK08
Protection Class IEC	:	I
Energy Class	:	A+
Working Temp.	:	-20° to 55°C
Glow-wire test	:	850°
Weight	:	2.00 Kg
Warranty	:	3 yrs (extendable to 5 yrs)

3000K 4000K 5000K 6500K

FT »

COMET-ALU 1500

TECHNICAL DATA



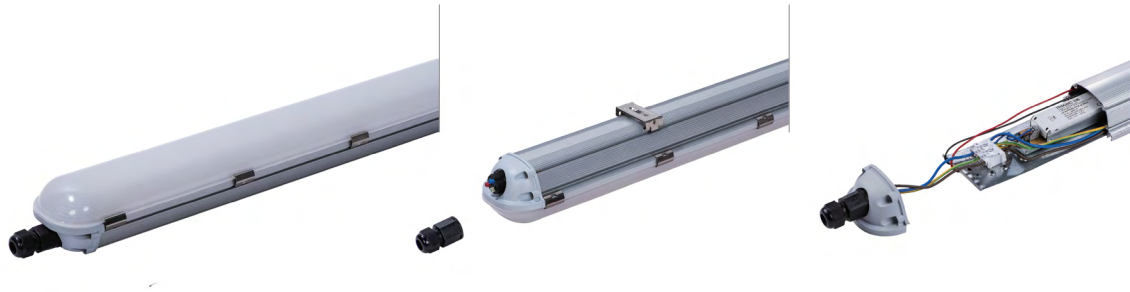
COMET-ALU 1500



COLOR TEMP.	POWER	LUMENS	CODE
3000K	75 W	8325 lm	EXT19017-30K
4000K		8650 lm	EXT19017-40K
6500K		9000 lm	EXT19017-65K

3000K 4000K 5000K 6500K

DIMENSION



NOTES

ISO DOC. NO.: SM-OPN-QSF08

CE RoHS

PROJECT
LUMINAIRE REF.
QUANTITY
DATE

Contact Name
Mobile
Email

www.switch-made.com

Updated on April 14, 2022

All technical specifications and datas are subject to modification at any time and without notice.
The rated values (@ta25°C) of luminous flux and electrical load are subject to initial tolerance of +/- 10%. Tolerance of CCT are subject to +/- 150K.