



FT



COVEX 300

TECHNICAL DATA



	120-277 Vac	IP66	IK07	CRI > 85	105 lm/W	DIMMABLE 1-10V
---	-------------	------	------	----------	----------	----------------

Outdoor cove lighting and wall lighting solution, compact design, easy plug and play, linkable cove light generates continuous lighting in the longer distance, high visual comfort, long lasting reliability, higher impact resistance, aluminum alloy body, silver finish, maximum linkable length of 45m (@230Vac), lockable and precision aiming adjustment of 82.5° vertical rotation, specially designed IP66 cable connectors, inbuilt driver with 1-10V dimming functionality.

DRIVER | Lighting Control
Standard | 1-10V

CRI | Standard
CRI >85 | CRI >90

BEAM ANGLE | 

FINISH | 

TECHNICAL DATA

LED	: NICHIA SMD LED
System Power	: 10 W
MacAdam Step	: SDCM <2
Luminaire Efficacy	: 105 lm/W (@4000K)
Lifetime	: L ₈₀ B ₁₀ 50,000Hrs, Ta@35°C
Max. Linkable	: 45m

GENERAL

Mounting	: Surface mounted, Outdoor
Housing	: Aluminium alloy
Heatsink	: Aluminium
Diffuser	: PC
Adjustability	: Yes
Driver Mounting	: Built-in
Emergency kit	: Not available

IP Rating	: IP66
IK Rating	: IK07
Protection Class IEC	: I
Energy Class	: A+
Working Temp.	: -20° to 55°C
Glow-wire test	: 650°
Weight	: 0.62 Kg
Warranty	: 3 yrs (extendable to 5 yrs)

3000K 4000K 5000K

FT »

COVEX 300

TECHNICAL DATA



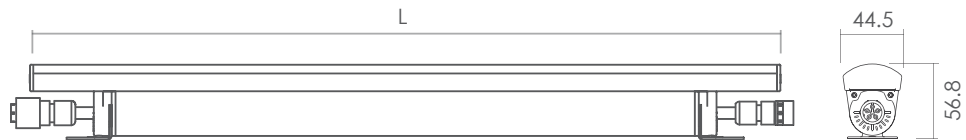
COVEX 300



DIMENSION	COLOR TEMP.	POWER	LUMENS	CODE
L 300	3000K	10 W	990 lm	EXT12020-30K
	4000K		1050 lm	EXT12020-40K

3000K 4000K 5000K

DIMENSION



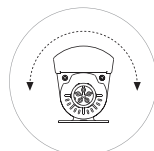
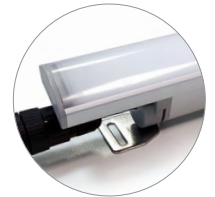
OPTIONAL (Accessories)

White

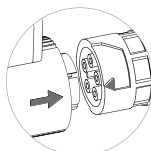
Soft connector (0.3m)



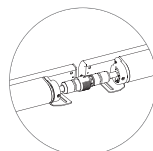
Input cable (1.5m)



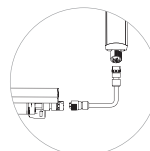
Tiltable



Easy to install



No dark-spot at
linking point



Flexible corner
interconnection

NOTES

ISO DOC. NO.: SM-OPN-QSF08

CE RoHS

PROJECT	
LUMINAIRE REF.	
QUANTITY	
DATE	
Contact Name	
Mobile	
Email	

www.switch-made.com

Updated on April 22, 2022

All technical specifications and datas are subject to modification at any time and without notice.
The rated values (@ta25°C) of luminous flux and electrical load are subject to initial tolerance of +/- 10%. Tolerance of CCT are subject to +/- 150K.