



FT



# MIRAGE 2-20 S

## TECHNICAL DATA



	220-240V 50-60Hz	IP43	100 lm/W	CITIZEN 1208 COB LED	CRI >80/>90/>97	DIMMABLE <b>DALI/1-10V</b> <i>Optional</i>
-----------------------------------------------------------------------------------	---------------------	------	----------	-------------------------	--------------------	--------------------------------------------------

High efficient gimbal downlight with double square trim, precise and variable accent lighting in the shop and retail sector, elegant optical design, outstanding quality of light with high visual comfort, housing made of die-cast aluminium with sand white/black powder-coated finishing, passive aluminium sheet heatsink ensuring better heat dissipation, high reflection ratio aluminium reflector, durable, SDCM<3, dimmable versions available, diverse beam angle choices.

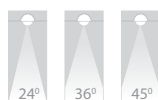
DRIVER  
2 x CC, 500mA, 35Vdc

	Lighting Control
Standard	Phase Dim. 1-10V DALI

CRI

	Standard
CRI >80	CRI >90 CRI >97

BEAM ANGLE



FINISH

White (WH)	Black (BK)
	

### TECHNICAL DATA

LED	: CITIZEN 1208
MacAdam Step	: <3 SDCM
Luminaire Efficacy	: 99 lm/W (@4000K)
Lifetime	: L <sub>70</sub> B <sub>50</sub> 50,000Hrs, Ta@35°C
UGR	: <10

### GENERAL

Mounting	: Ceiling recessed, Indoor
Housing	: Die-cast aluminium
Reflector	: Aluminium
Diffuser	: Clear glass
Adjustability	: Yes
Driver mounting	: Remote
Emergency kit	: Optional

IP Rating	: IP43
IK Rating	: IK04
Protection Class IEC	: II
Energy Class	: A+
Working Temp.	: -20° to 50°C
Glow-wire test	: 960°C
Weight	: 1.53 Kg
Warranty	: 3 yrs (extendable to 5 yrs)

2700K 3000K 4000K 5000K

FT »

# MIRAGE 2-20 S

## TECHNICAL DATA



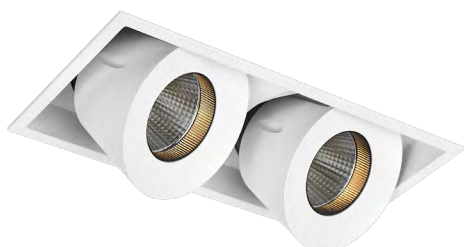
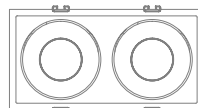
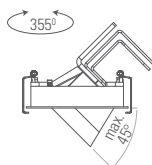
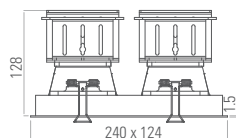
### MIRAGE 2-20 S



COLOR TEMP.	POWER	CRI	LUMENS	CODE
2700K	2 x 20 W	90+	3652 lm	INT08036-27K
3000K			3716 lm	INT08036-30K
4000K			3960 lm	INT08036-40K

2700K 3000K 4000K 5000K

### DIMENSION



### NOTES

ISO DOC. NO.: SM-OPN-QSF08

CE RoHS

PROJECT	
LUMINAIRE REF.	
QUANTITY	
DATE	
Contact Name	
Mobile	
Email	

www.switch-made.com

Updated on April 18, 2022

All technical specifications and datas are subject to modification at any time and without notice.  
The rated values (@ta25°C) of luminous flux and electrical load are subject to initial tolerance of +/- 10%. Tolerance of CCT are subject to +/- 150K.