



FT





MODUL 28-I

TECHNICAL DATA



	220-240V 50-60Hz	IP43	100 lm/W	CITIZEN 1208 COB LED	CRI >80/>90/>97	DIMMABLE DALI/1-10V <i>Optional</i>
---	---------------------	------	----------	-------------------------	--------------------	--

High efficient modular lighting system with elegant optical design, gimbal installation frame with single lighting head, outstanding quality of light and high visual comfort, housing made of die-cast aluminium with sand white/black powder-coated finishing, passive cold forging aluminium heatsink ensuring better heat dissipation, faceted reflector with clear diffuser, durable and robust structure, SDCM<3, consistent color stability, remote dimmable versions available.

DRIVER CC, 700mA, 35Vdc	Lighting Control Standard <input type="checkbox"/> Phase Dim. <input type="checkbox"/> 1-10V <input type="checkbox"/> DALI <input type="checkbox"/>
CRI	<input type="checkbox"/> CRI >80 <input type="checkbox"/> Standard CRI >90 <input type="checkbox"/> CRI >97
BEAM ANGLE	 32°  50°
FINISH	<input type="checkbox"/> White (WH) <input type="checkbox"/> Grey (GY) <input type="checkbox"/> Black (BK)

TECHNICAL DATA

LED	: CITIZEN 1208
MacAdam Step	: <3 SDCM
Luminaire Efficacy	: 100 lm/W (@4000K)
Lifetime	: L ₇₀ B ₅₀ 50,000Hrs, Ta@35°C
UGR	: <19

GENERAL

Mounting	: Ceiling recessed, Indoor
Housing	: Die-cast aluminium
Reflector	: Aluminium
Diffuser	: Clear glass
Adjustability	: Yes
Driver mounting	: Remote
Emergency kit	: Optional

IP Rating	: IP43
IK Rating	: IK04
Protection Class IEC	: II
Energy Class	: A+
Working Temp.	: -20° to 50°C
Glow-wire test	: 960°C
Weight	: 1.2 Kg
Warranty	: 3 yrs (extendable to 5 yrs)

2700K 3000K 4000K 5000K

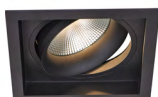
FT »

MODUL 28-I

TECHNICAL DATA



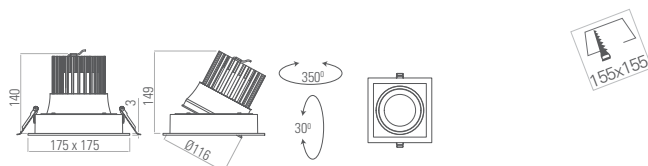
MODUL 28-I



COLOR TEMP.	POWER	CRI	LUMENS	CODE
2700K	28 W	90+	2500 lm	INT04389-27K
3000K			2680 lm	INT04389-30K
4000K			2790 lm	INT04389-40K

2700K 3000K 4000K 5000K

DIMENSION



NOTES

ISO DOC. NO.: SM-OPN-QSF08

CE RoHS

PROJECT	
LUMINAIRE REF.	
QUANTITY	
DATE	
Contact Name	
Mobile	
Email	

www.switch-made.com

Updated on April 18, 2022

All technical specifications and datas are subject to modification at any time and without notice.
The rated values (@ta25°C) of luminous flux and electrical load are subject to initial tolerance of +/- 10%. Tolerance of CCT are subject to +/- 150K.