



FT



## MODUL 28-III

### TECHNICAL DATA



	220-240V 50-60Hz	IP43	100 lm/W	CITIZEN 1208 COB LED	CRI >80/>90/>97	DIMMABLE <b>DALI/1-10V</b> <i>Optional</i>
---	---------------------	------	----------	-------------------------	--------------------	--

High efficient modular lighting system with elegant optical design, gimbal installation frame with triple lighting head, outstanding quality of light and high visual comfort, housing made of die-cast aluminium with sand white/black powder-coated finishing, passive cold forging aluminium heatsink ensuring better heat dissipation, faceted reflector with clear diffuser, durable and robust structure, SDCM<3, consistent color stability, remote dimmable versions available.

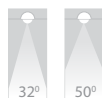
DRIVER  
3 x CC, 700mA, 35Vdc

Standard	Lighting Control		
	Phase Dim.	1-10V	DALI

CRI

CRI >80	Standard	
	CRI >90	CRI >97

BEAM ANGLE



FINISH

White (WH)	Grey (GY)	Black (BK)
------------	-----------	------------

#### TECHNICAL DATA

LED	: CITIZEN 1208
MacAdam Step	: <3 SDCM
Luminaire Efficacy	: 100 lm/W (@4000K)
Lifetime	: L <sub>70</sub> B <sub>50</sub> 50,000Hrs, Ta@35°C
UGR	: <19

#### GENERAL

Mounting	: Ceiling recessed, Indoor
Housing	: Die-cast aluminium
Reflector	: Aluminium
Diffuser	: Clear glass
Adjustability	: Yes
Driver mounting	: Remote
Emergency kit	: Optional

IP Rating	: IP43
IK Rating	: IK04
Protection Class IEC	: II
Energy Class	: A+
Working Temp.	: -20° to 50°C
Glow-wire test	: 960°C
Weight	: 3.2 Kg
Warranty	: 3 yrs (extendable to 5 yrs)

2700K 3000K 4000K 5000K

FT »

# MODUL 28-III

## TECHNICAL DATA



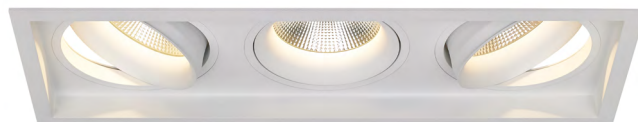
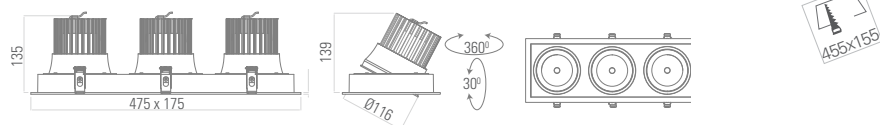
### MODUL 28-III



COLOR TEMP.	POWER	CRI	LUMENS	CODE
2700K	3 x 28 W	90+	7500 lm	INT04395-27K
3000K			8040 lm	INT04395-30K
4000K			8370 lm	INT04395-40K

2700K 3000K 4000K 5000K

### DIMENSION



### NOTES

ISO DOC. NO.: SM-OPN-QSF08

CE RoHS

PROJECT	
LUMINAIRE REF.	
QUANTITY	
DATE	
Contact Name	
Mobile	
Email	