

FT »

SIGMA 3010

TECHNICAL DATA



	200-240 Vac	IP54	CRI >80	SMD LED
-----------------------------------------------------------------------------------	----------------	------	------------	---------

Surface mounted wall light with dual side illumination, discreet and integrative design to use with architectural surroundings, glare free light and enhanced visual comfort, body made of aluminium, ideal solution for building façade, exterior walls, entrance zones, interior spaces.

DRIVER
CC, 230mA, 60-80 Vdc

Lighting Control
Standard

CRI

Standard
CRI >80

BEAM ANGLE



FINISH

Black (BK)

TECHNICAL DATA

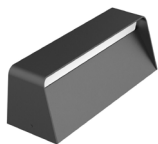
LED	: SMD LED
System Power	: 18 W
MacAdam Step	: SDCM <3
Luminaire Efficacy	: 50 lm/W (@4000K)
Lifetime	: L ₈₀ B ₁₀ 50,000Hrs, Ta@25°C
UGR	: <14

GENERAL

Mounting	: Surface Mounted, Indoor, outdoor
Housing	: ADC 12 Die-cast Aluminum
Heat sink	: Aluminium
Diffuser	: PC
Adjustability	: No
Driver mounting	: Inbuilt
Emergency kit	: Not available
IP Rating	: IP54
IK Rating	: IK08
Protection Class IEC	: I
Energy Class	: A+
Working Temp.	: -20° to 50°C
Glow-wire test	: 750°C
Weight	: 1.05 Kg
Warranty	: 3 yrs (extendable to 5 yrs)

3000K 4000K 5000K 5700K

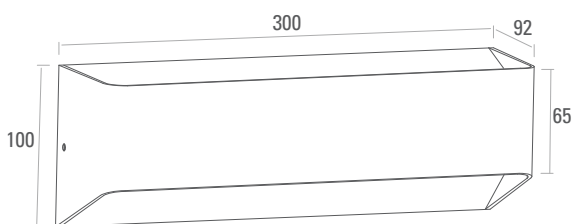
SIGMA 3010



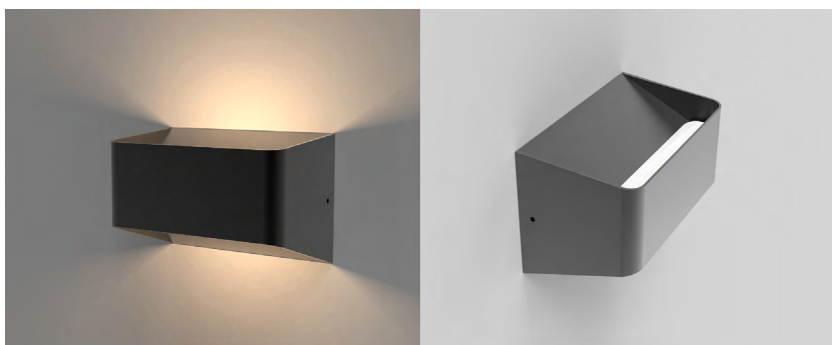
COLOR TEMP.	POWER	LUMENS	CODE
3000K	18 W	820 lm	INT20137-30K
4000K		900 lm	INT20137-40K
5000K		985 lm	INT20137-50K

3000K 4000K 5000K 5700K

DIMENSION



APPLICATION



NOTES

ISO DOC. NO.: SM-OPN-QSF08

CE RoHS

PROJECT	
LUMINAIRE REF.	
QUANTITY	
DATE	
Contact Name	
Mobile	
Email	

