

FT



SILL RGBW

TECHNICAL DATA



	24Vdc	IP65	IK08	PF >0.9	CREE LED
---	-------	------	------	---------	----------

Sleek and slim window perimeter lighting for outdoor application, precise ellipsoidal light beam for focused illumination, discreet with no visible screws, small dimensions to appear invisible when installed on window surrounds, adapts to all window types and window sill inclinations, single/RGB/RGBW optional versions, die-cast aluminium compact body, with high corrosion resistance powder coating, polycarbonate diffuser.

DRIVER CV, 24Vdc	Lighting Control Standard
LED	RGBW
BEAM ANGLE	
FINISH	<div>White (WH)</div> <div>Grey (GY)</div> <div>Black (BK)</div>

TECHNICAL DATA

LED	: CREE CLQ6A
System Power	: 10 W
MacAdam Step	: SDCM <3
LED Quantity	: 3 pcs.
Lifetime	: L ₇₀ B ₅₀ 50,000Hrs, Ta@35°C
UGR	: -

GENERAL

Mounting	: Surface mounted, Outdoor
Housing	: Die-cast aluminium
Heat Sink	: Aluminium
Lens	: PC
Adjustability	: No
Driver Mounting	: Remote
Emergency kit	: Not available

IP Rating	: IP65
IK Rating	: IK08
Protection Class IEC	: I
Energy Class	: A++
Working Temp.	: -20° to 55°C
Glow-wire test	: 850°
Weight	: 0.50 Kg
Warranty	: 3 yrs (extendable to 5 yrs)

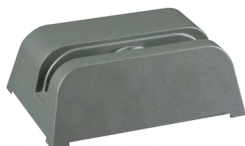
FT »

SILL RGBW

TECHNICAL DATA



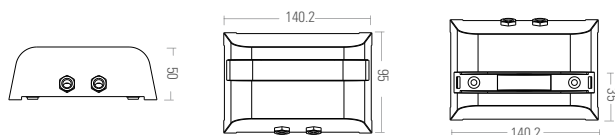
SILL RGBW



COLOR TEMP.	LED QTY.	POWER	LUMENS	CODE
RGBW	3 pcs.	10 W	-	EXT05144-RGBW

3000K 4000K 6000K

DIMENSION



NOTES

ISO DOC. NO.: SM-OPN-QSF08

CE RoHS

PROJECT	
LUMINAIRE REF.	
QUANTITY	
DATE	
Contact Name	
Mobile	
Email	

www.switch-made.com

Updated on April 21, 2022

All technical specifications and datas are subject to modification at any time and without notice.
The rated values (@ta25°C) of luminous flux and electrical load are subject to initial tolerance of +/- 10%. Tolerance of CCT are subject to +/- 150K.