

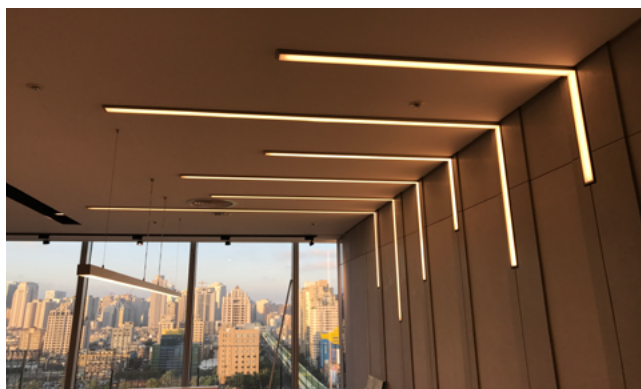


FT



LINE S1607

TECHNICAL DATA



Code: PRS1607

Functional Lighting: Interior, office, shop, schools, tertiary

Lifetime: 50,000 hrs.

Working Temperature: -20°C to +45°C

Heat Dissipation: Max. 15W/m

CCT: 2700K/ 3000K/ 4000K/ 6000K

Beam Angle: 110°

Material: Aluminium 6063-T5 (Oxidized silver)

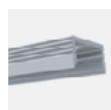
Diffuser: PC

Weight: 0.30 Kg / 2.5 m

Process: Anodic Oxidation / Powder

3 Years Warranty

Accessories Included



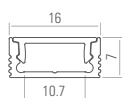
Alu. Profile/
Diffuser



End Caps x 2

(for 2500mm)

DIMENSION



Length:
2504mm (Incl. endcap)



Adjustable Brackets
(Optional)

FINISH

White (WH)
RAL 9003

Aluminium (AL)

Black (BK)
RAL 9005



(Standard)

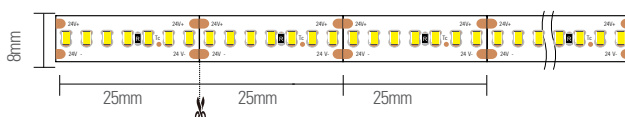
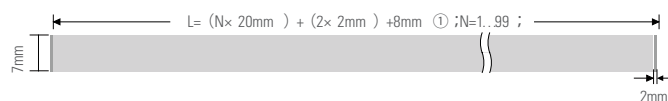
Profile Cutting Calculation

Profile flexible cutting size:

$$L_{min} = (1 \times 20mm) + (2 \times 2mm) + 8mm \text{ ① } = 32mm$$

$$L_{max} = (99 \times 20mm) + (2 \times 2mm) + 8mm \text{ ① } = 1992mm$$

Cutout: W=17mm, H=7.5mm



www.switch-made.com

All technical specifications and datas are subject to modification at any time and without notice.

The rated values (@ta25°C) of luminous flux and electrical load are subject to initial tolerance of +/- 10%. Tolerance of CCT are subject to +/- 150K.

●● TECHNICAL CHARACTERISTICS



LED STRIP

INPUT VOLTAGE	IP	CCT	CRI	W/M	LEDS/M	CUTTING UNIT (MM)	LAMP LUMEN/M @CRI 90	LUMINAIRE LUMEN/M @CRI 90	DIMENSION (MM)	CODE
24Vdc	IP33	4000K	90	15 W/m	280	25mm (7 LEDs)	1266 lm/m	1076 lm/m	5000 x 8 x 1.3	-

CCT: **2700K** **3000K** **4000K** **6000K**



LED DRIVER

OUTPUT VOLTAGE	TYPE	IP	POWER	MOUNTING	DIMENSION (MM)	CODE
24Vdc	DIMMABLE 0-10V	IP20	*60W	Remote	285 x 30 x 21	-

**Please consult us for more choice of LED driver*

●● OPTIONAL ACCESSORIES



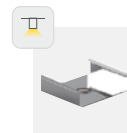
180° Adj. Mounting
CP06-AD



90° Adj. Mounting
CP21-90

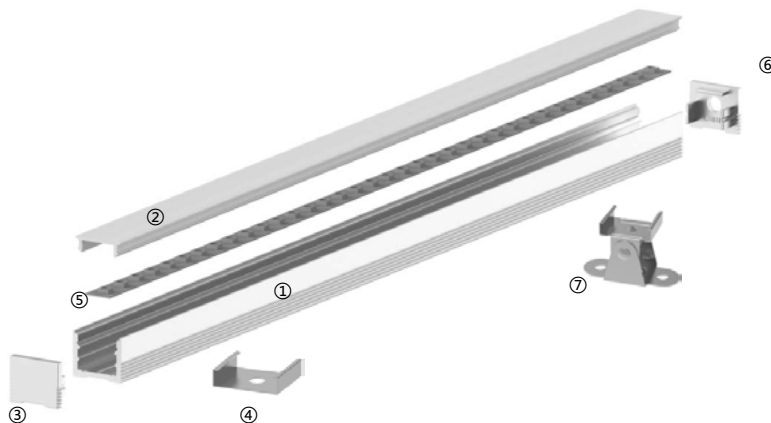


End Cap With Hole
S1607-ECS-H



Mounting
Bracket x 4

●● STRUCTURE



Accessories Included

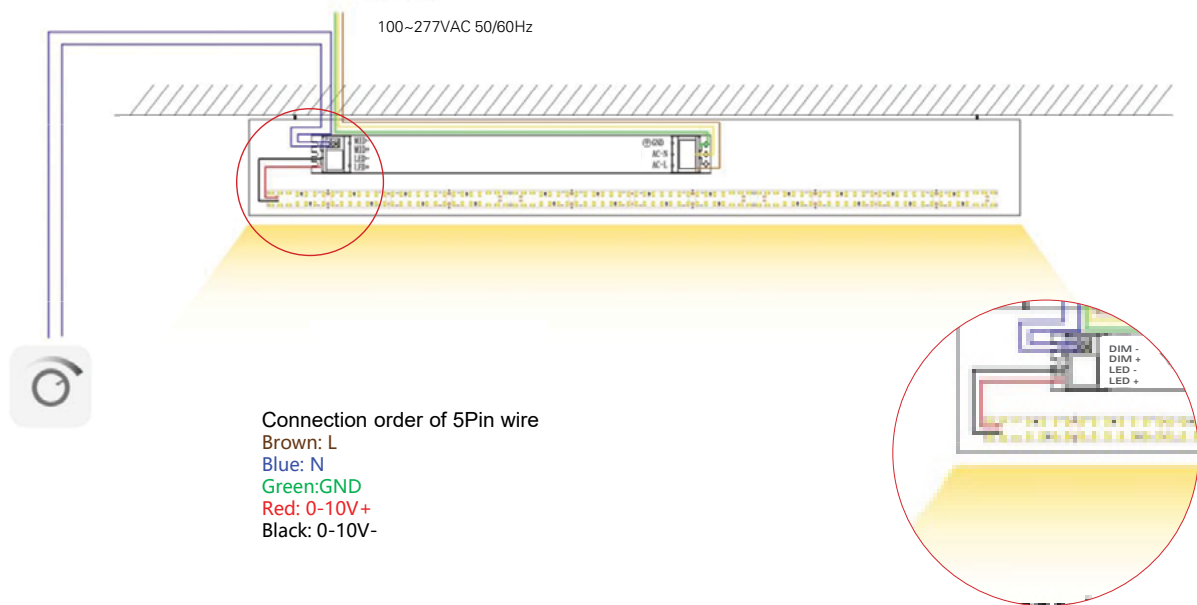
1. Aluminium Profile
2. Diffuser
3. End caps
4. Mounting Bracket

Optional Accessories

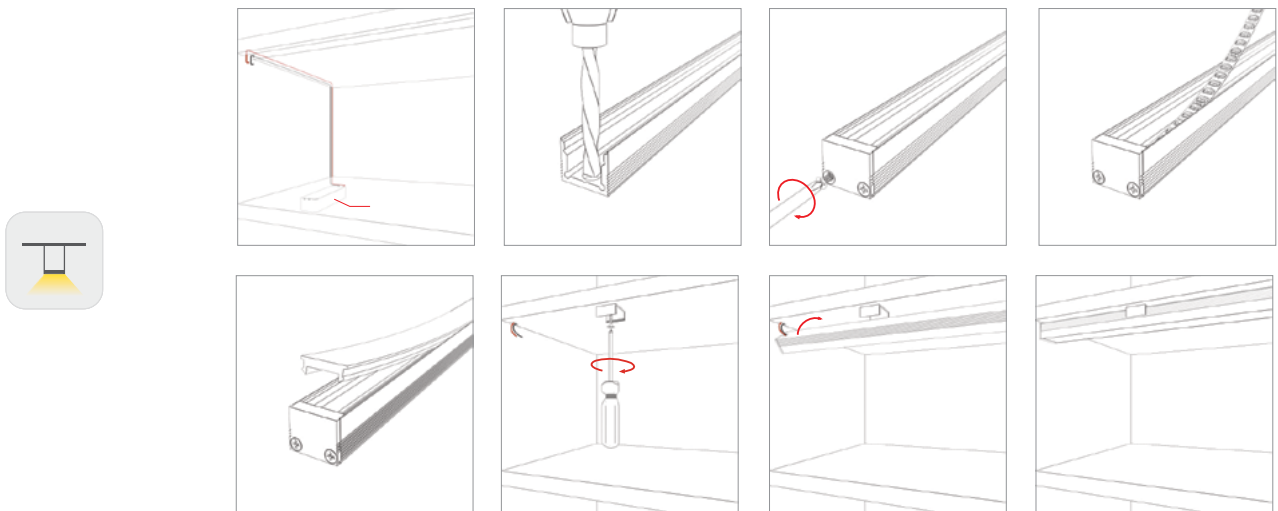
5. LED Lighting Source
6. Endcap with hole
7. 180° Adjustable clips



● ● WIRING DRAWING



● ● INSTALLATION



Note: For trimless recessed installation, need to fix using glass cement glue.

NOTES

--

PROJECT	
LUMINAIRE REF.	
QUANTITY	
DATE	