

FT



LINE S1613

TECHNICAL DATA



Code: PRS1613

Functional Lighting: Interior, office, shop, schools, tertiary

Lifetime: 50,000 hrs.

Working Temperature: -20°C to +45°C

Heat Dissipation: Max. 15W/m

CCT: 2700K / 3000K / 4000K / 6000K

Beam Angle: 110°

Material: Aluminium 6063-T5 (Oxidized silver)

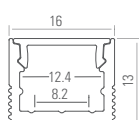
Diffuser: PC

Weight: 0.44 Kg / 2.5 m

Process: Anodic Oxidation / Powder

3 Years Warranty

DIMENSION



Length:
2504mm (Incl. endcap)



Adjustable Brackets
(Optional)

FINISH

White (WH)
Ral 9003

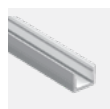
Aluminium (AL)

Black (BK)
Ral 9005



(Standard)

Accessories Included



Alu. Profile



Diffuser



End Caps x 2

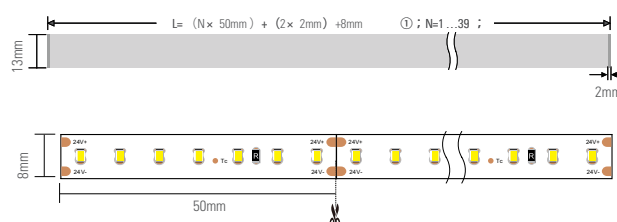
(for 2500mm)

Profile Cutting Calculation

$$L_{min} = (1 \times 50mm) + (2 \times 2mm) + 8mm \text{ ①} = 62mm$$

$$L_{max} = (49 \times 50mm) + (2 \times 2mm) + 8mm \text{ ①} = 2462mm$$

Cutout: W=17mm, H=13.5mm



●● TECHNICAL CHARACTERISTICS



LED STRIP

INPUT VOLTAGE	IP	CCT	CRI	W/M	LEDs/M	CUTTING UNIT (MM)	LAMP LUMEN/M @CRI 90	LUMINAIRE LUMEN/M @CRI 90	DIMENSION (MM)	CODE
24Vdc	IP33	4000K	>90	6.6 W/m	140	50mm (7 LEDs)	590 lm/m	500 lm/m	5000 x 8 x 1.2	-

CCT: **2700K** **3000K** **4000K** **6000K**



LED DRIVER

OUTPUT VOLTAGE	TYPE	IP	POWER	MOUNTING	DIMENSION (MM)	CODE
24Vdc	DIMMABLE 0-10V	IP20	*30W	Remote	230 x 30 x 21	-

**Please consult us for more choice of LED driver*

●● OPTIONAL ACCESSORIES



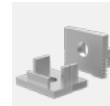
Mounting
Bracket x 8



180° Adj. Mounting
CP16-AD

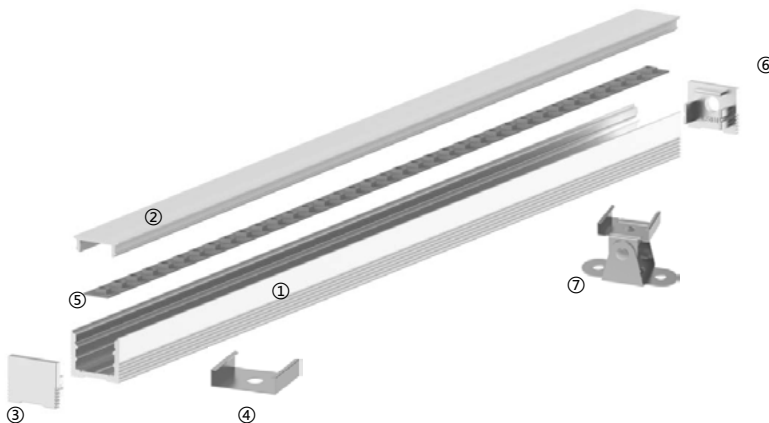


90° Adj. Mounting
CP21-90



End Cap With Hole
S1613-EC-H

●● STRUCTURE



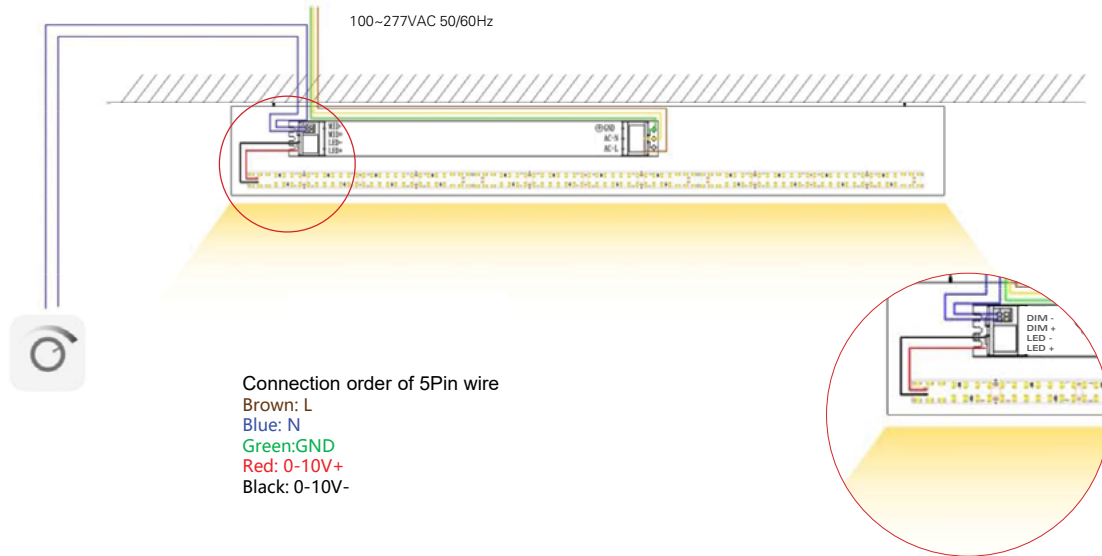
Accessories Included

1. Aluminium Profile
2. Diffuser
3. End caps
4. Mounting Bracket

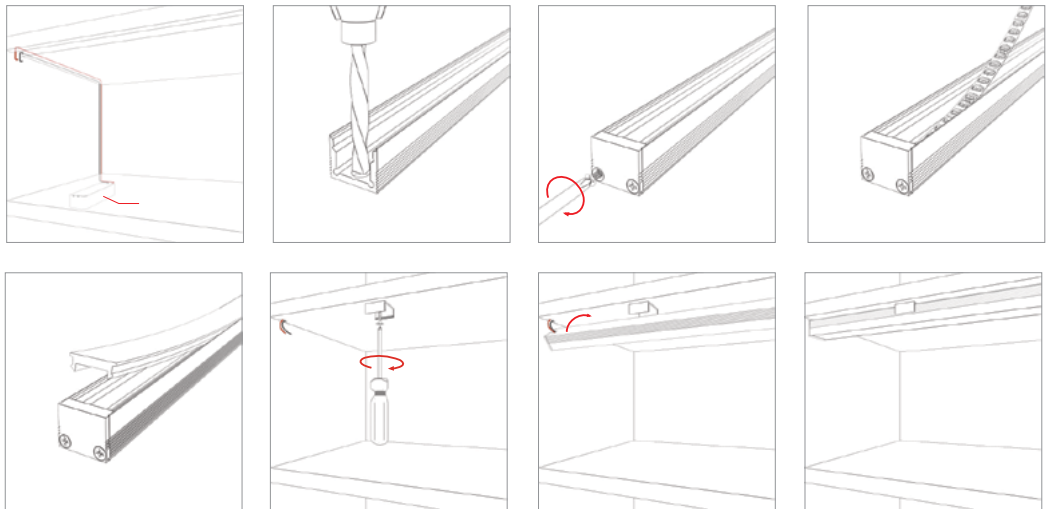
Optional Accessories

5. LED Lighting Source
6. Endcap with hole
7. 180° Adjustable clips

● ● WIRING DRAWING



● ● INSTALLATION



Note: For trimless recessed installation, need to fix using glass cement glue.

NOTES

--

PROJECT	
LUMINAIRE REF.	
QUANTITY	
DATE	