



FT



LINE S1911K

TECHNICAL DATA



Code: PRS1911K

Functional Lighting: Interior, office, shop, schools, tertiary

Lifetime: 50,000 hrs.

Working Temperature: -20°C to +45°C

Heat Dissipation: Max. 15W/m

CCT: 2700K/ 3000K/ 4000K/ 6000K

Beam Angle: 110°

Material: Aluminium 6063-T5 (Oxidized silver)

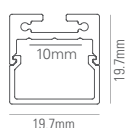
Diffuser: PC

Weight: 0.6 Kg / 2.5 m

Process: Anodic Oxidation / Powder

3 Years Warranty

DIMENSION



Length:
2504mm (Incl. endcap)

FINISH

White (WH) RAL 9003 Aluminium (AL) Black (BK) RAL 9005



(Standard)

Accessories Included



Alu. Profile/
Diffuser



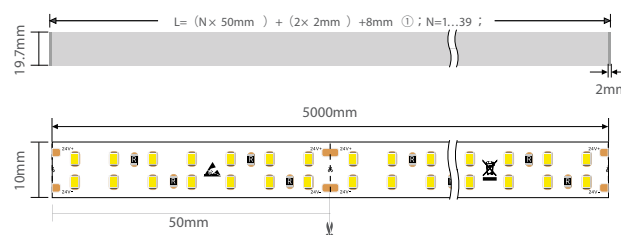
End Caps x 2

(for 2500mm)

Profile Cutting Calculation

$$L_{min} = (1 \times 50mm) + (2 \times 2mm) + 8mm \text{ ① } = 62mm$$

$$L_{max} = (39 \times 50mm) + (2 \times 2mm) + 8mm \text{ ① } = 1962mm$$



●● TECHNICAL CHARACTERISTICS



LED STRIP

INPUT VOLTAGE	IP	CCT	CRI	W/M	LEDs/M	CUTTING UNIT (MM)	LAMP LUMEN/M @CRI 90	LUMINAIRE LUMEN/M @CRI 90	DIMENSION (MM)	CODE
24Vdc	IP33	4000K	>90	15 W/m	280	50mm (14 LED)	1510 lm/m	1284 lm/m	5000 x 10 x 1.2	-

CCT: **2700K** **3000K** **4000K** **6000K**



LED DRIVER

OUTPUT VOLTAGE	TYPE	IP	POWER	MOUNTING	DIMENSION (MM)	CODE
24Vdc	DIMMABLE 0-10V	IP20	*60W	Remote	285 x 30 x 21	-

**Please consult us for more choice of LED driver*

●● OPTIONAL ACCESSORIES



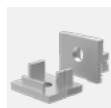
Mounting Bracket
x 4



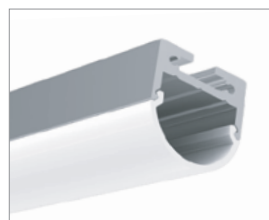
S1911K-PY



180° Extender



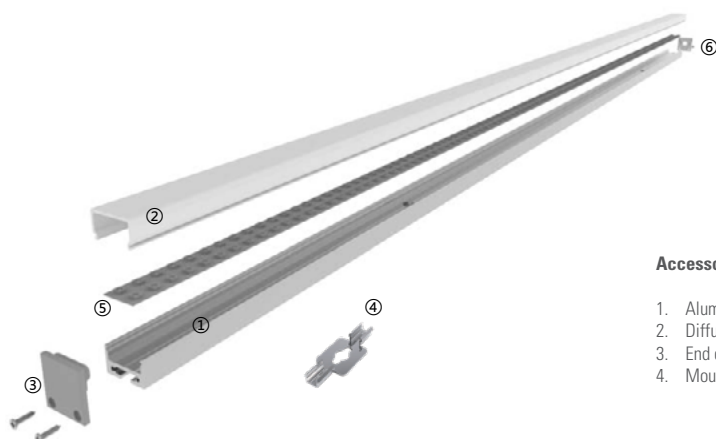
End Cap With Hole
S1911K-ECS-H



LINE S1911C
PRS1911C

(Optional)

●● STRUCTURE



Accessories Included

1. Aluminium Profile
2. Diffuser
3. End caps
4. Mounting Bracket

Optional Accessories

5. LED Lighting Source
6. Endcap with hole

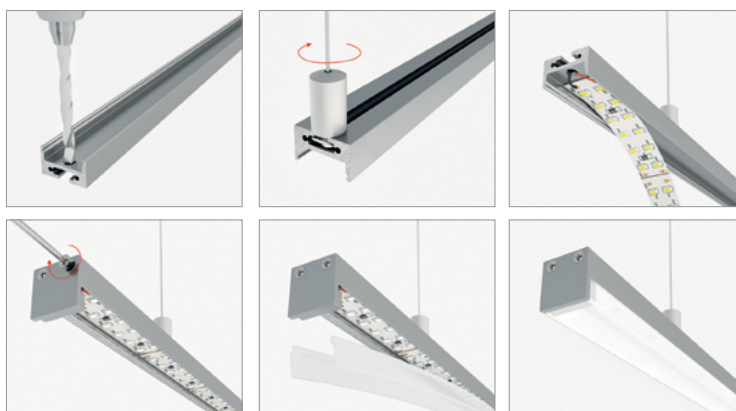
● ● INSTALLATION



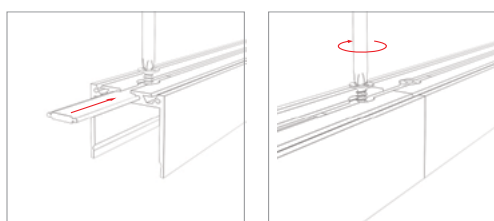
SURFACE MOUNTED



SUSPENDED



180° EXTENDER



NOTES

PROJECT	
LUMINAIRE REF.	
QUANTITY	
DATE	
Contact Name	
Mobile	
Email	

ISO DOC. NO.: SM-OPN-QSF08

CE RoHS