



FT



LINE S3535

TECHNICAL DATA



Code: PRS3535

Functional Lighting: Interior, office, shop, schools, tertiary

Lifetime: 50,000 hrs.

Working Temperature: -20°C to +45°C

Heat Dissipation: Max. 25W/m

CCT: 2700K/ 3000K/ 4000K/ 5000K/ 6000K

Beam Angle: 110°

Material: Aluminium 6063-T5 (Oxidized silver)

Diffuser: Silicon

Weight: 2.00 Kg / 2.5 m

Process: Anodic Oxidation / Powder

3 Years Warranty

Accessories Included



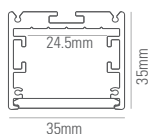
Alu. Profile/
Diffuser



End Caps x 2

(for 2500mm)

DIMENSION



Length: 2503mm (Incl. endcap)

FINISH

White (WH)
RAL 9003

Aluminium (AL)

Black (BK)
RAL 9005

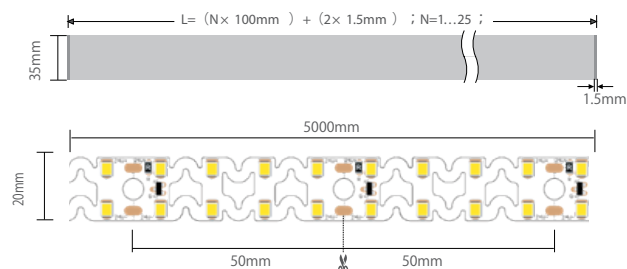


(Standard)

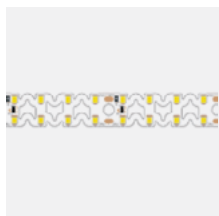
Profile Cutting Calculation

$$L_{min} = (1 \times 100mm) + (2 \times 1.5mm) = 103mm$$

$$L_{max} = (25 \times 100mm) + (2 \times 1.5mm) = 2503mm$$



●● TECHNICAL CHARACTERISTICS



LED STRIP

INPUT VOLTAGE	IP	CCT	CRI	W/M	LEDs/M	CUTTING UNIT (MM)	LAMP LUMEN/M @CRI 90	LUMINAIRE LUMEN/M @CRI 90	DIMENSION (MM)	CODE
24Vdc	IP33	4000K	>90	20 W/m	160	50mm (8 LEDs)	2494 lm/m	2120 lm/m	5000 x 20 x 1.5	-

CCT: **2700K** **3000K** **4000K** **5000K** **6000K**



LED DRIVER

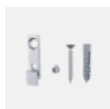
OUTPUT VOLTAGE	TYPE	IP	POWER	MOUNTING	DIMENSION (MM)	CODE
24Vdc	DIMMABLE 0-10V	IP20	*60W	Remote	285 x 30 x 21	-

**Please consult us for more choice of LED driver*

●● OPTIONAL ACCESSORIES



Suspension kit
S3535-PN



Surface mounting buckle
S3535-CL05



Connector
S3535-EX26

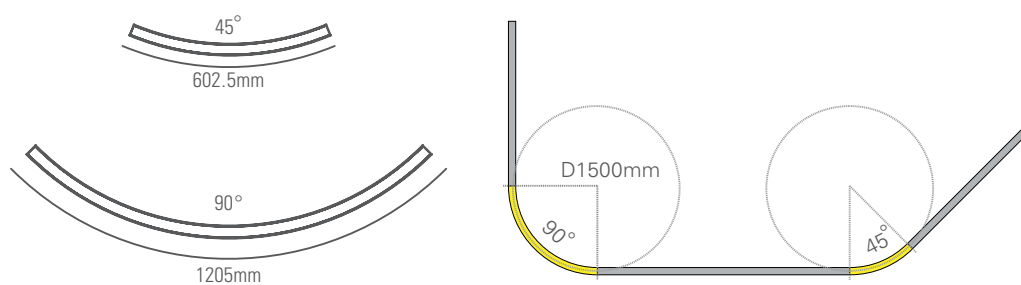


Recessed bracket
S3535-RE13

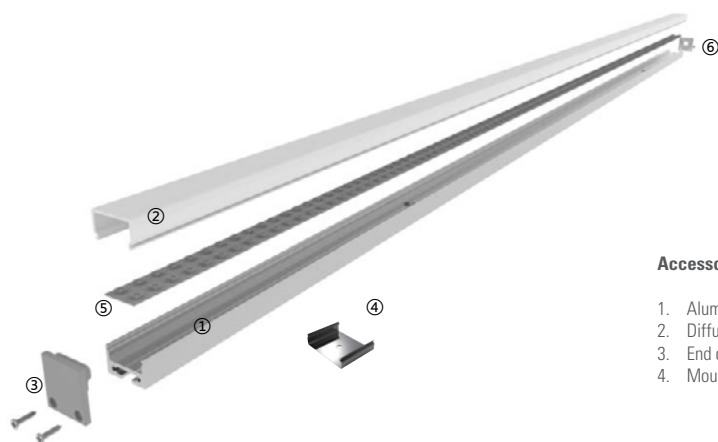
●● BENDING OPTIONAL



Bending (Optional)



● ● STRUCTURE



Accessories Included

1. Aluminium Profile
2. Diffuser
3. End caps
4. Mounting Bracket

Optional Accessories

5. LED Lighting Source
6. Endcap with hole

●● INSTALLATION



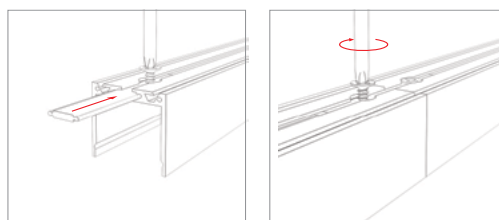
SURFACE MOUNTED



SUSPENDED



180° EXTENDER



NOTES

--

PROJECT	
LUMINAIRE REF.	
QUANTITY	
DATE	