

FT »

## LINE S7977

### TECHNICAL DATA



**Code:** PRS7977

**Functional Lighting:** Interior, office, shop, schools, tertiary

**Lifetime:** 50,000 hrs.

**Working Temperature:** -20°C to +45°C

**Heat Dissipation:** Max. 42W/m

**CCT:** 2700K/ 3000K/ 4000K/ 5000K/ 6000K

**Beam Angle:** 110°

**Material:** Aluminium 6063-T5 (Oxidized silver)

**Diffuser:** PC

**Weight:** 2.65 Kg / 2.5 m

**Process:** Anodic Oxidation / Powder

**3 Years Warranty**

### Accessories Included



Alu. Profile/  
Diffuser



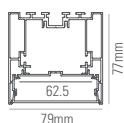
End Caps x 2



Buckle x 3

(for 2500mm)

### DIMENSION



Length:  
2507mm (incl. endcap)

### FINISH

White (WH) RAL 9003    Aluminium (AL)    Black (BK) RAL 9005



(Standard)

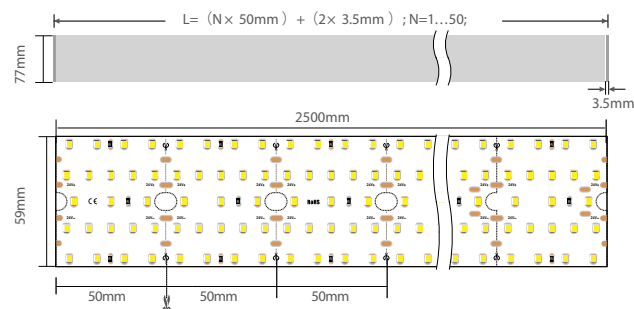
### Profile Cutting Calculation

$$L_{min} = (1 \times 50mm) + (2 \times 3.5mm) = 57mm$$

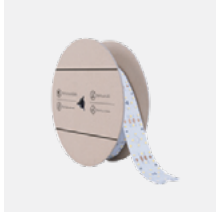
$$L_{max} = (50 \times 50mm) + (2 \times 3.5mm) = 2507mm$$

For build-in power supply:

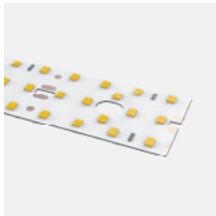
$$L_{min} = (10 \times 50mm) + (2 \times 3.5mm) = 507mm$$



### ●● TECHNICAL CHARACTERISTICS



OR



#### FLEX ROLL

INPUT VOLTAGE	IP	CCT	W/M	LEDS/M	CUTTING UNIT (MM)	LAMP LUMEN/M @CRI 80	LUMINAIRE LUMEN/M @CRI 80	DIMENSION (MM)	CODE
24Vdc	IP33	4000K	30 W/m	420	50 (21 LED)	3906 lm/m	3320 lm/m	2500 x 59 x 1.5	

CCT: **2700K** **3000K** **4000K** **5000K** **6000K**

CRI: &gt;80 &gt;95

#### LED PCB

INPUT VOLTAGE	IP	CCT	W/M	LEDS/M	CUTTING UNIT (MM)	LAMP LUMEN/M @CRI 80	LUMINAIRE LUMEN/M @CRI 80	DIMENSION (MM)	CODE
24Vdc	IP33	4000K	30 W/m	420	50 (21 LED)	3906 lm/m	3320 lm/m	499 x 62 x 5.6	PCB8420-62

CCT: **2700K** **3000K** **4000K** **5000K** **6000K**

CRI: &gt;80 &gt;95



#### LED DRIVER

OUTPUT VOLTAGE	TYPE	IP	POWER	MOUNTING	DIMENSION (MM)	CODE
24Vdc	DIMMABLE 0-10V	IP20	*100W	Integrated	355 x 30 x 21	-

\*Please consult us for more choice of LED driver

### ●● OPTIONAL ACCESSORIES



Suspension Kit with Junction box  
S7977-PY



Suspension Kit  
S7977-PN



Recessed Buckle  
S7977-RE



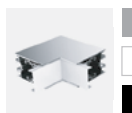
Screw  
S7977-CL



180° Extender  
S7977-180



"L" Type Light Corner  
S7977-L90



"L" Type Light Corner (Inner)  
S7977-L90N



"L" Type Light Corner (Exterior)  
S7977-L90W

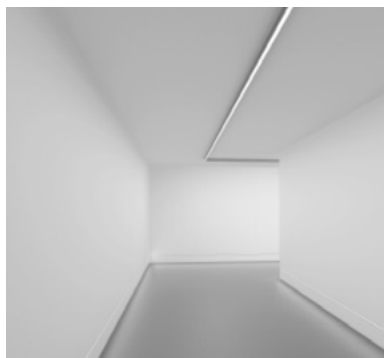


"T" Type Light Corner  
S7977-T90

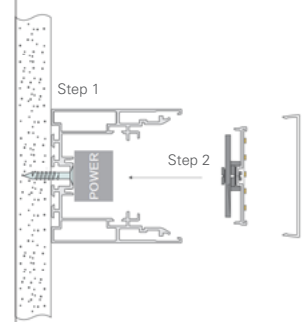
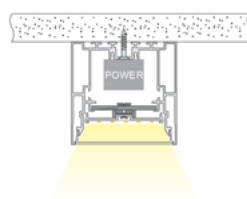


"X" Type Light Corner  
S7977-X90

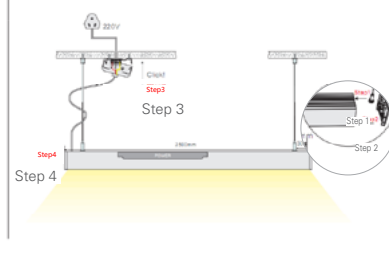
### ●● APPLICATIONS



#### Surface Mounted



#### Suspended



#### Recessed



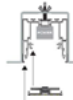
Step 1



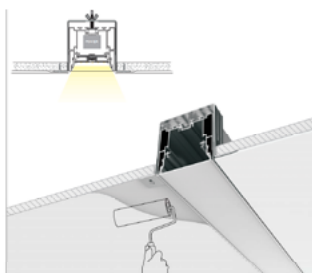
Step 3



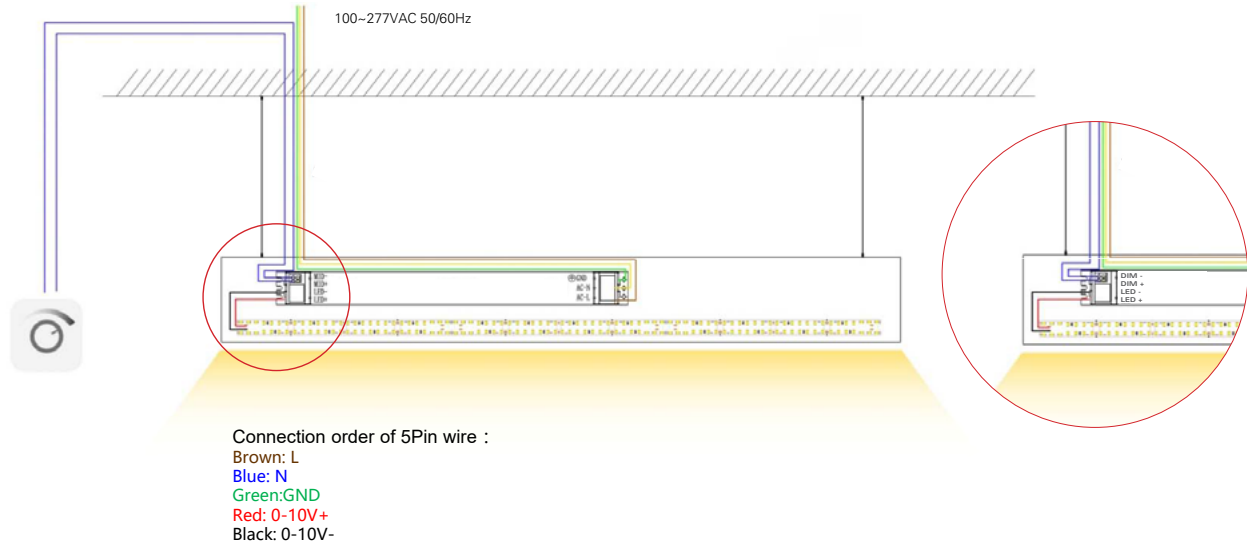
Step 2



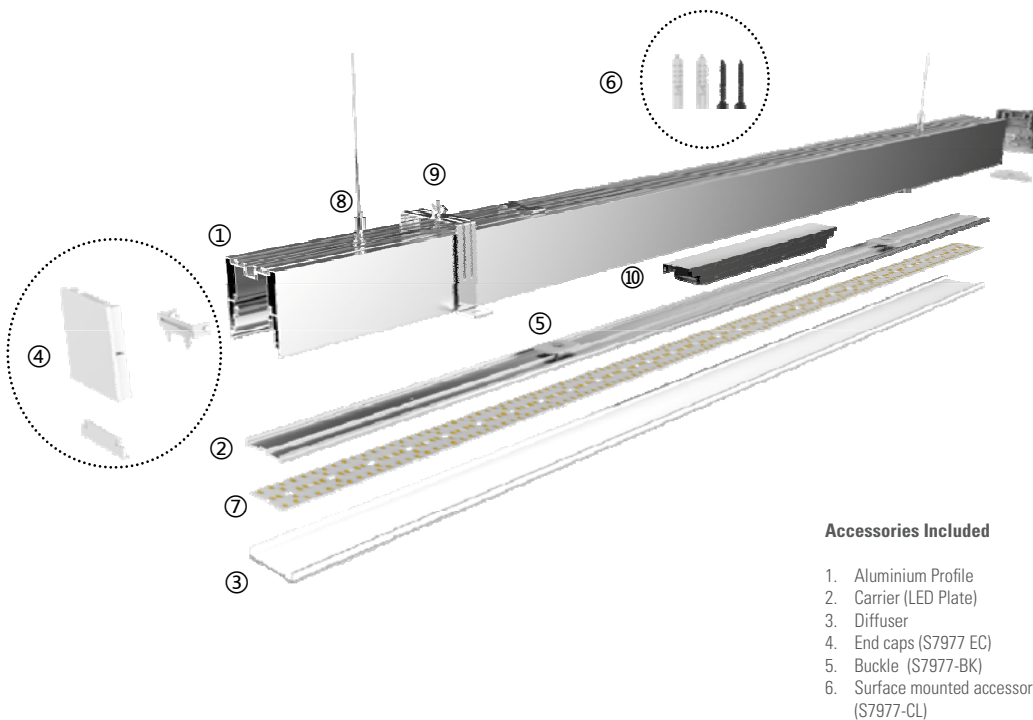
Step 4



### ● ● WIRING DRAWING



### ● ● STRUCTURE



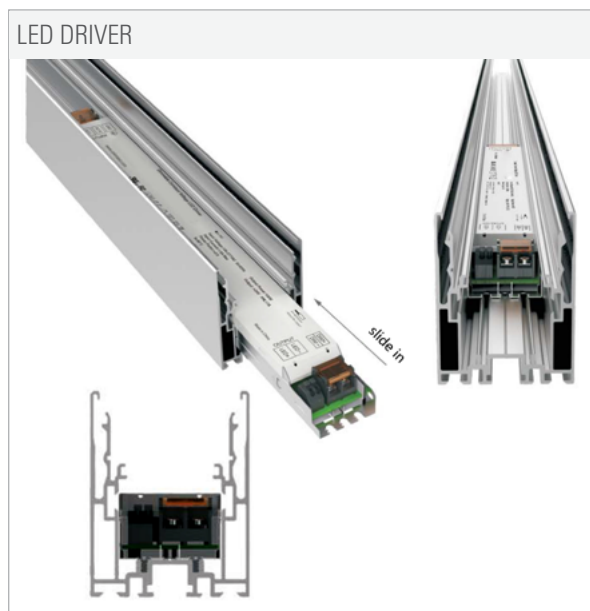
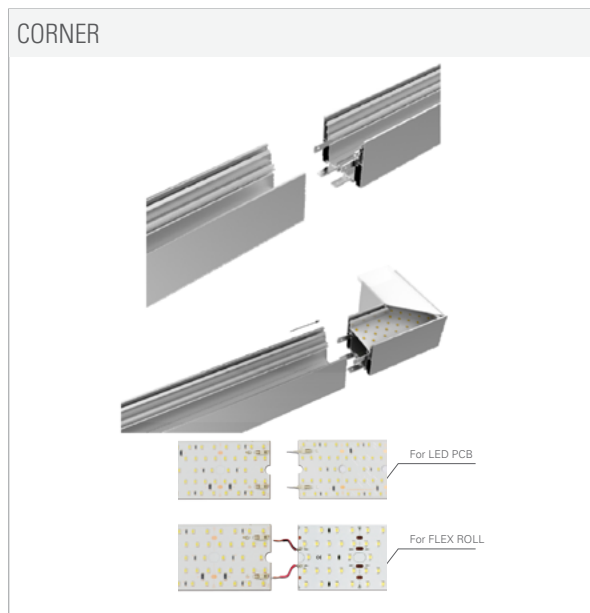
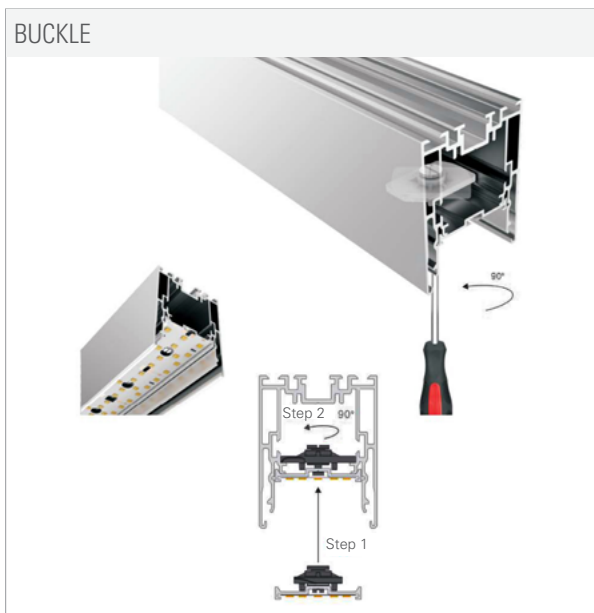
#### Accessories Included

1. Aluminium Profile
2. Carrier (LED Plate)
3. Diffuser
4. End caps (S7977 EC)
5. Buckle (S7977-BK)
6. Surface mounted accessory (S7977-CL)

#### Optional Accessories

7. LED Lighting Source
8. Pendant (with Junction Box) (S7977-PY)
9. Recessed Accessory (S7977-RE)
10. Power (ALI04022)

● ● INSTALLATION



NOTES

--

PROJECT	
LUMINAIRE REF.	
QUANTITY	
DATE	