

FT



LINE T60

TECHNICAL DATA



Code: PRT60

Functional Lighting: Interior, office, shop, schools, tertiary

Lifetime: 50,000 hrs.

Working Temperature: -20°C to +45°C

Heat Dissipation: Max. 25W/m

CCT: 2700K / 3000K / 4000K / 5000K / 6000K

Beam Angle: 110°

Material: Aluminium 6063-T5 (Oxidized silver)

Diffuser: PC

Weight: 1.0 Kg / 2.5 m

Process: Anodic Oxidation / Powder

3 Years Warranty

Accessories Included



Alu. Profile/
Diffuser



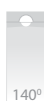
End Caps x 2

(for 2500mm)

DIMENSION



Length:
2504mm (incl. endcap)



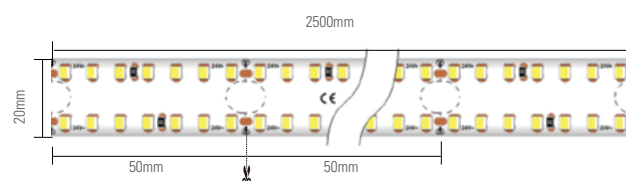
FINISH

White (WH) RAL 9003 Aluminium (AL) Black (BK) RAL 9005



(Standard)

Profile Cutting Calculation



●● TECHNICAL CHARACTERISTICS



LED STRIP

INPUT VOLTAGE	IP	CCT	CRI	W/M	LEDs/M	CUTTING UNIT (MM)	LAMP LUMEN/M @CRI 80	LUMINAIRE LUMEN/M @CRI 80	DIMENSION (MM)	CODE
24Vdc	IP33	4000K	>80	20 W/m	280	50mm (14 LED)	2706 lm/m	2300 lm/m	2500 x 20 x 1.5	-

CCT: **2700K** **3000K** **4000K** **5000K** **6000K**



LED DRIVER

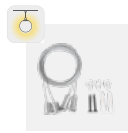
OUTPUT VOLTAGE	TYPE	IP	POWER	MOUNTING	DIMENSION (MM)	CODE
24Vdc	DIMMABLE 0-10V	IP20	*60W	Remote	285 x 30 x 21	-

**Please consult us for more choice of LED driver*

●● OPTIONAL ACCESSORIES



Suspension Kit with Junction box
T60-PY

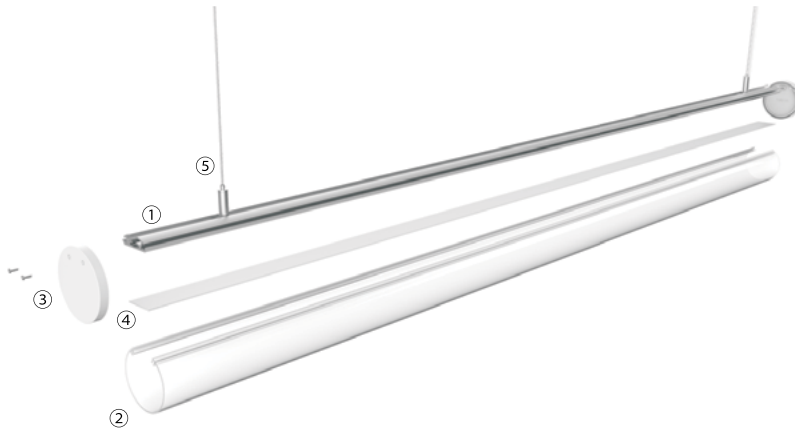


Suspension Kit
T60-PN



180°-Extender
T60-EX09

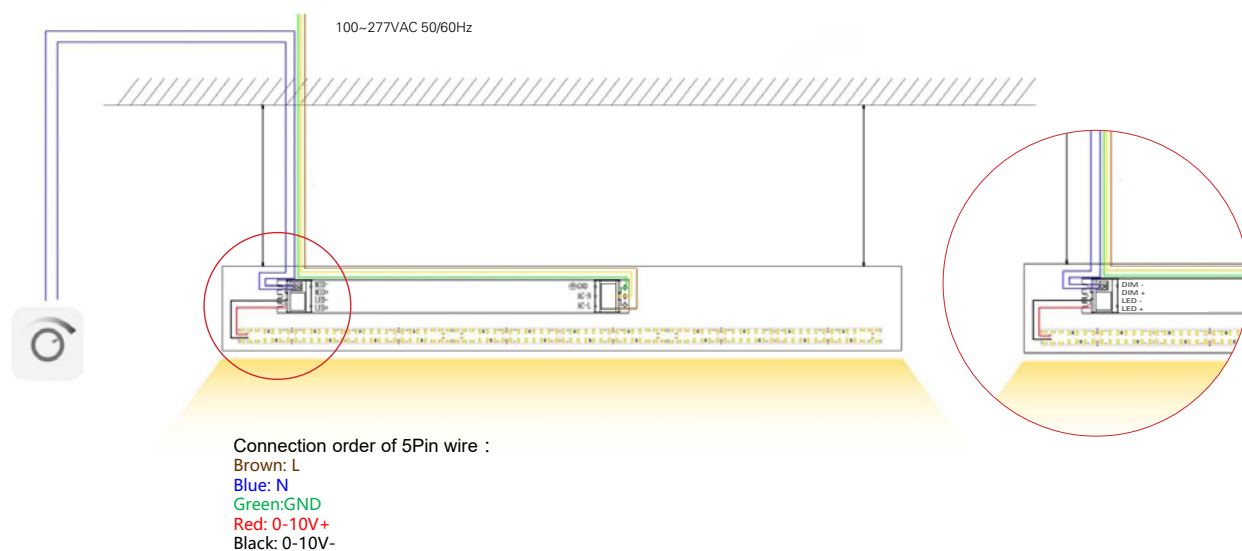
●● STRUCTURE



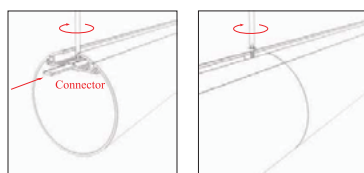
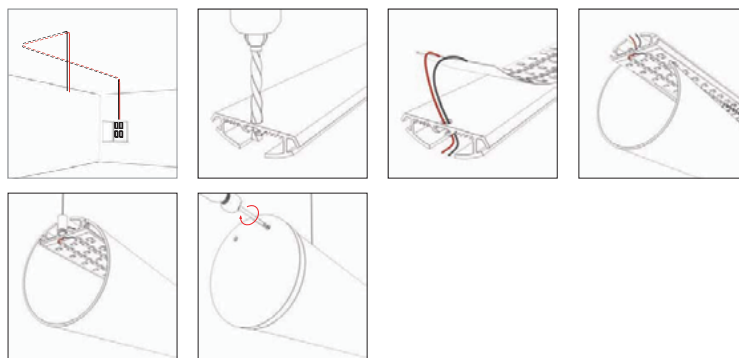
Accessories Included

1. Aluminium Profile
2. Diffuser
3. End caps
4. LED Lighting source
5. Suspension kit

● ● WIRING DRAWING



● ● INSTALLATION



NOTES

--

PROJECT	
LUMINAIRE REF.	
QUANTITY	
DATE	