

FT



LINE S5470(F)

TECHNICAL DATA



Code: PRS5470F

Functional Lighting: Interior, office, shop, schools, tertiary

Lifetime: 50,000 hrs.

Working Temperature: -20°C to +45°C

Heat Dissipation: Max. 38W/m

CCT: 2700K/ 3000K/ 4000K/ 5000K/ 6000K

Beam Angle: 110°

Material: Aluminium 6063-T5 (Oxidized silver)

Diffuser: PC

Weight: 2.6 Kg / 2.5 m

Process: Anodic Oxidation / Powder

3 Years Warranty

Accessories Included



Alu. Profile/
Diffuser



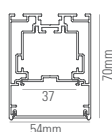
End Caps x 2



Buckle x 4

(for 2500mm)

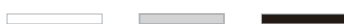
DIMENSION



Length:
2507mm (Incl. endcap)

FINISH

White (WH) RAL 9003 Aluminium (AL) Black (BK) RAL 9005



(Standard)

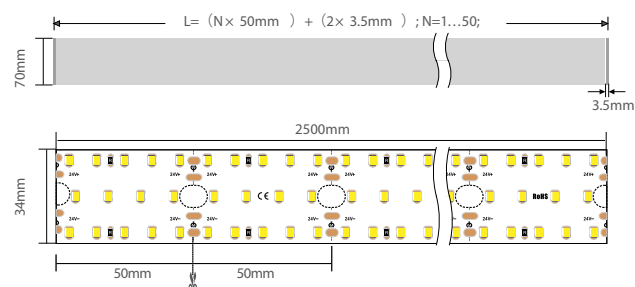
Profile Cutting Calculation

$$L_{min} = (1 \times 50mm) + (2 \times 3.5mm) = 57mm$$

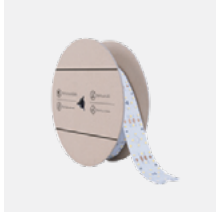
$$L_{max} = (50 \times 50mm) + (2 \times 3.5mm) = 2507mm$$

For build-in power supply:

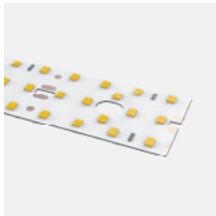
$$L_{min} = (10 \times 50mm) + (2 \times 3.5mm) = 507mm$$



●● TECHNICAL CHARACTERISTICS



OR



FLEX ROLL

INPUT VOLTAGE	IP	CCT	W/M	LEDs/M	CUTTING UNIT (MM)	LAMP LUMEN/M @CRI 80	LUMINAIRE LUMEN/M @CRI 80	DIMENSION (MM)	CODE
24Vdc	IP33	4000K	25 W/m	280	50mm (14 LED)	3254 lm/m	2765 lm/m	2500 x 20 x 1.7	-

CCT: **2700K** **3000K** **4000K** **5000K** **6000K**

CRI: >80 >95

LED PCB

INPUT VOLTAGE	IP	CCT	W/M	LEDs/M	CUTTING UNIT (MM)	LAMP LUMEN/M @CRI 80	LUMINAIRE LUMEN/M @CRI 80	DIMENSION (MM)	CODE
24Vdc	IP33	4000K	25 W/m	280	50mm (14 LED)	3254 lm/m	2765 lm/m	299/499 x 23 x 5.6	-

CCT: **2700K** **3000K** **4000K** **5000K** **6000K**

CRI: >80 >95



LED DRIVER

OUTPUT VOLTAGE	TYPE	IP	POWER	MOUNTING	DIMENSION (MM)	CODE
24Vdc	DIMMABLE 0-10V	IP20	*100W	Integrated	355 x 30 x 21	-

*Please consult us for more choice of LED driver

●● OPTIONAL ACCESSORIES



Suspension Kit with Junction box
S5470-PY



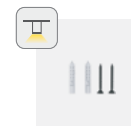
Suspension Kit
S5470-PN



Recessed Buckle
S5470-RE



Wall Mounted Buckle
S5470-WL



Screw
S5470-CL



180° Extender
S5470-180



"L" Type Light Corner
S5470-L90



"L" Type Light Corner (Inner)
S5470-L90N



"L" Type Light Corner (Exterior)
S5470-L90W

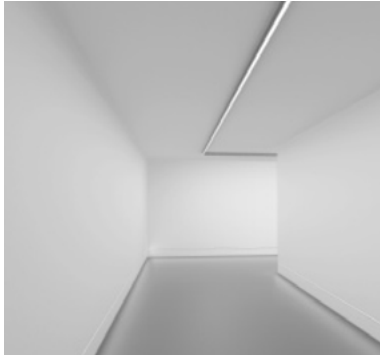


"T" Type Light Corner
S5470-T90

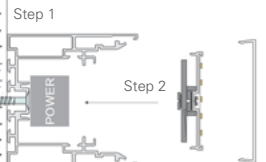
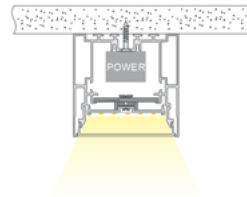


"X" Type Light Corner
S5470-X90

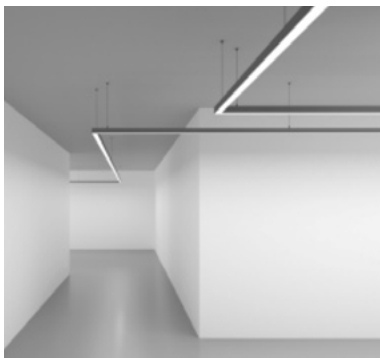
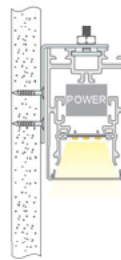
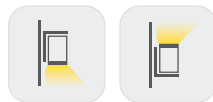
●● APPLICATIONS



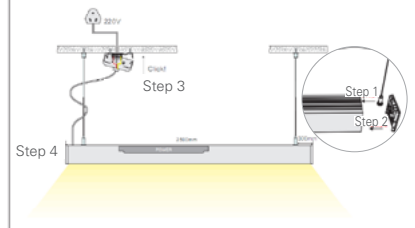
Surface Mounted



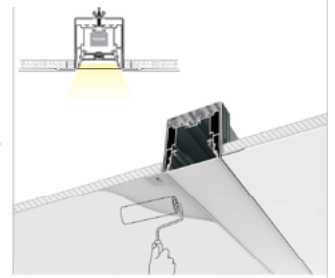
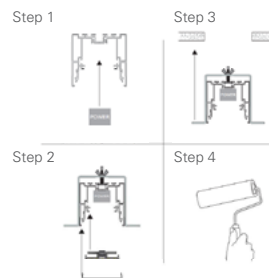
Wall Mounted



Suspended

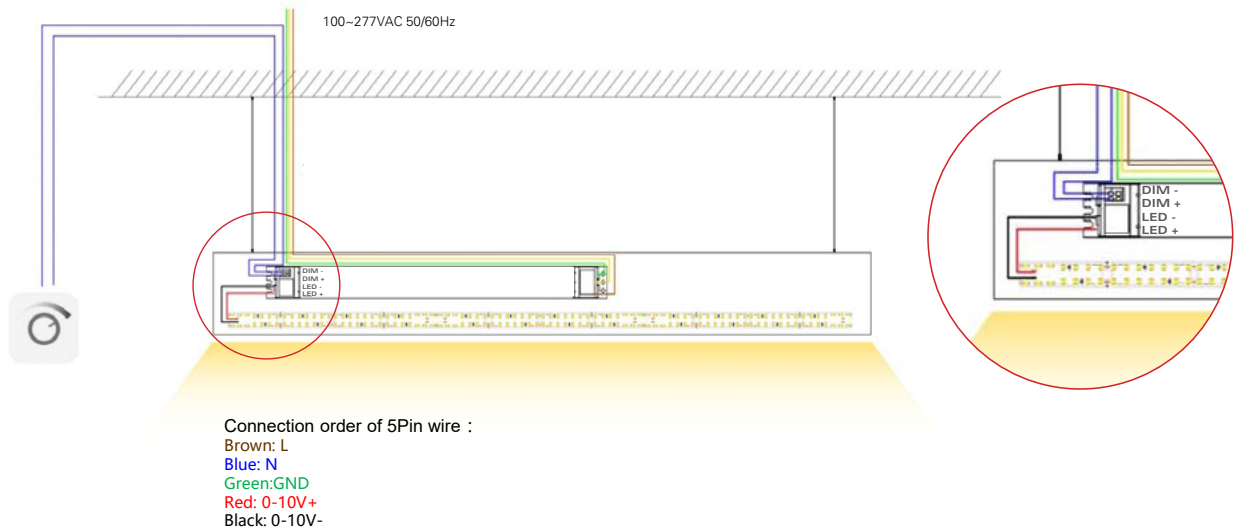


Recessed

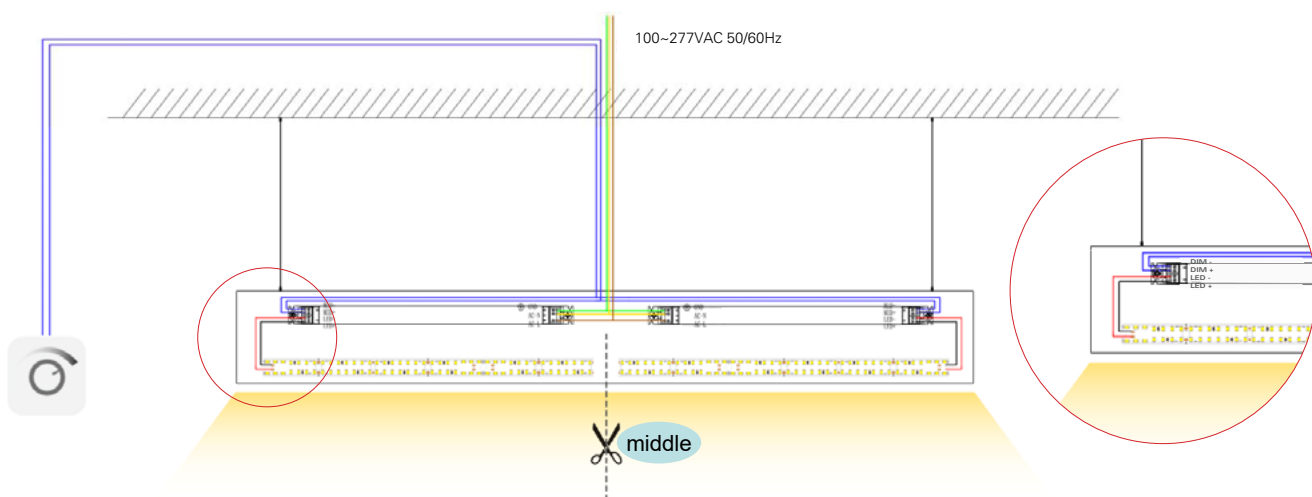


● ● WIRING DRAWING

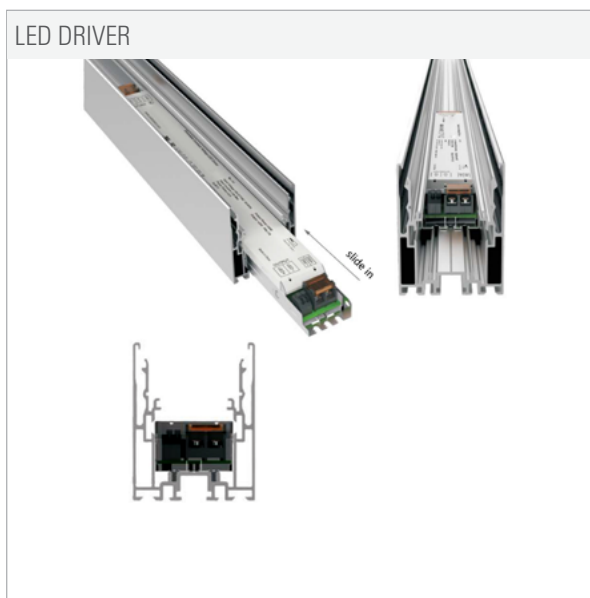
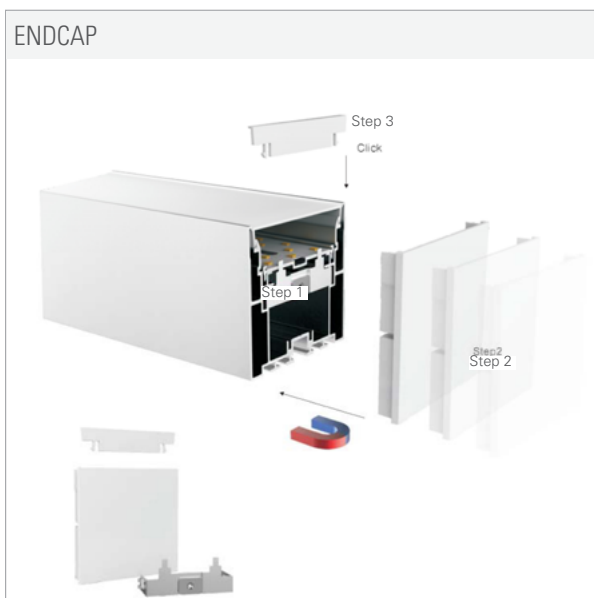
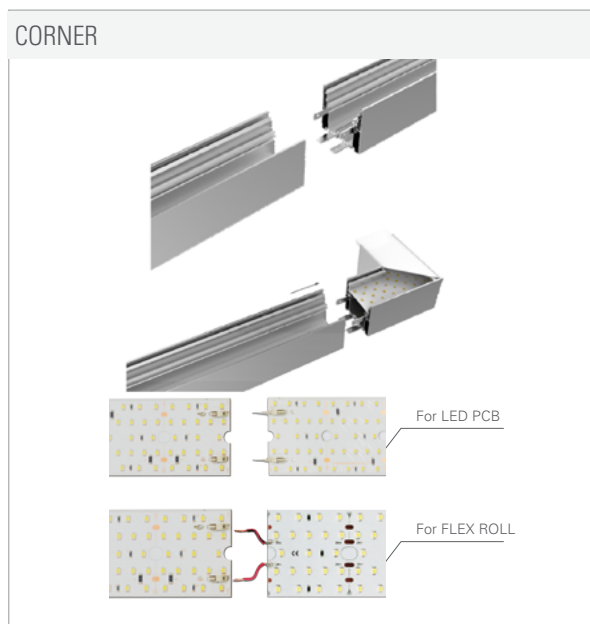
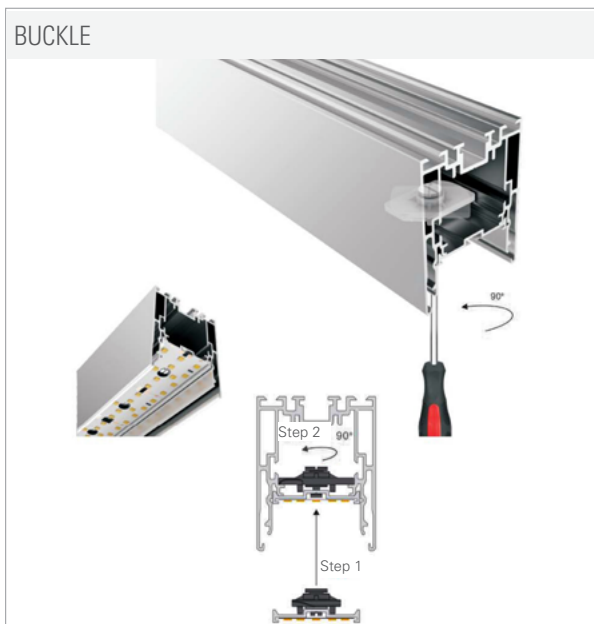
- If the LED light source power is less than 25W, need to install only one power supply:



- If the LED light source power is between 25W & 50W, need 2 power supply together and separate 2 LED light sources:



● ● INSTALLATION



NOTES

--

PROJECT	
LUMINAIRE REF.	
QUANTITY	
DATE	